



ELECTRONIC COPY

LG787666515
Report verification at igi.org



May 8, 2026
IGI Report Number **LG787666515**
Description **LABORATORY GROWN DIAMOND**
Shape and Cutting Style **CUT CORNERED
RECTANGULAR MODIFIED
BRILLIANT**
Measurements **8.09 X 5.77 X 3.86 MM**
GRADING RESULTS
Carat Weight **1.67 CARAT**
Color Grade **FANCY VIVID YELLOW**
Clarity Grade **VS 1**

May 8, 2026
IGI Report Number **LG787666515**
Description **LABORATORY GROWN DIAMOND**
Shape and Cutting Style **CUT CORNERED RECTANGULAR
MODIFIED BRILLIANT**
Measurements **8.09 X 5.77 X 3.86 MM**

GRADING RESULTS

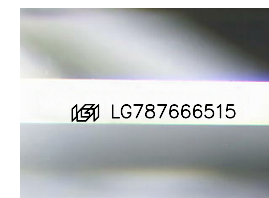
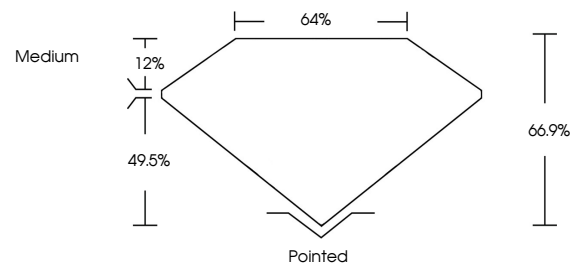
Carat Weight **1.67 CARAT**
Color Grade **FANCY VIVID YELLOW**
Clarity Grade **VS 1**

ADDITIONAL GRADING INFORMATION

Polish **VERY GOOD**
Symmetry **EXCELLENT**
Fluorescence **NONE**
Inscription(s) **IGI LG787666515**

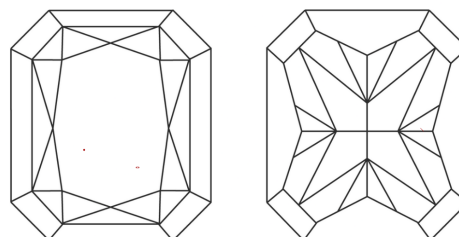
Comments: This Laboratory Grown Diamond was created by Chemical Vapor Deposition (CVD) growth process.

PROPORTIONS



Sample Image Used

CLARITY CHARACTERISTICS



KEY TO SYMBOLS

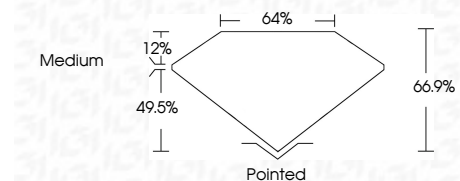
Red symbols indicate internal characteristics.
Green symbols indicate external characteristics.

COLOR

D E F G H I J Faint Very Light Light

CLARITY

| FL | IF | VS ¹⁻² | VS ¹⁻² | SI ¹⁻² | I ¹⁻³ |
|----------|---------------------|-----------------------------|------------------------|-------------------|------------------|
| Flawless | Internally Flawless | Very Very Slightly Included | Very Slightly Included | Slightly Included | Included |



ADDITIONAL GRADING INFORMATION

Polish **VERY GOOD**
Symmetry **EXCELLENT**
Fluorescence **NONE**
Inscription(s) **IGI LG787666515**
Comments: This Laboratory Grown Diamond was created by Chemical Vapor Deposition (CVD) growth process.



May 8, 2026
IGI Report No **LG787666515**
CUT CORNERED RECT. MODIFIED BRILLIANT
8.09 X 5.77 X 3.86 MM
Carat Weight **1.67 CARAT**
Color Grade **FANCY VIVID YELLOW**
Clarity Grade **VS 1**
Depth **66.9%**
Table **64%**
Girdle **Medium**
Culet **Pointed**
Polish **VERY GOOD**
Symmetry **EXCELLENT**
Fluorescence **NONE**
Inscription(s) **IGI LG787666515**
Comments: This Laboratory Grown Diamond was created by Chemical Vapor Deposition (CVD) growth process.