



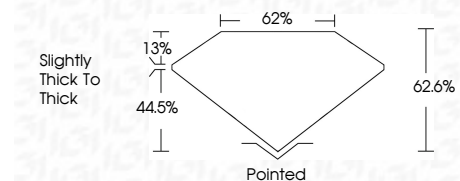
ELECTRONIC COPY

LG787666447
Report verification at igi.org



May 12, 2026
IGI Report Number **LG787666447**
Description **LABORATORY GROWN DIAMOND**
Shape and Cutting Style **MODIFIED HEXAGONAL MIXED CUT**
Measurements **12.74 X 7.00 X 4.38 MM**

GRADING RESULTS
Carat Weight **2.54 CARATS**
Color Grade **E**
Clarity Grade **VVS 2**



ADDITIONAL GRADING INFORMATION
Polish **EXCELLENT**
Symmetry **EXCELLENT**
Fluorescence **NONE**
Inscription(s) **IGI LG787666447**
Comments: This Laboratory Grown Diamond was created by Chemical Vapor Deposition (CVD) growth process. Type IIa



May 12, 2026
IGI Report No **LG787666447**
MODIFIED HEXAGONAL MIXED CUT
Carat Weight **2.54 CARATS**
Color Grade **E**
Clarity Grade **VVS 2**
Depth **44.5%**
Table **13%**
Girdle **Slightly Thick To Thick**
Culet **Pointed**
Polish **EXCELLENT**
Symmetry **EXCELLENT**
Fluorescence **NONE**
Inscription(s) **IGI LG787666447**
Comments: This Laboratory Grown Diamond was created by Chemical Vapor Deposition (CVD) growth process. Type IIa

LABORATORY GROWN DIAMOND REPORT

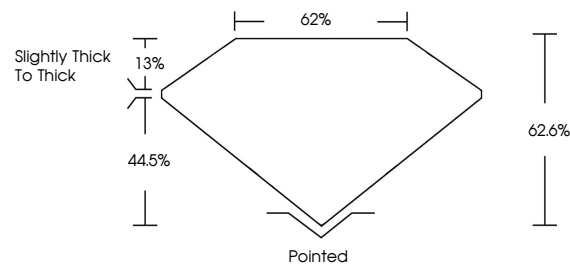
May 12, 2026
IGI Report Number **LG787666447**
Description **LABORATORY GROWN DIAMOND**
Shape and Cutting Style **MODIFIED HEXAGONAL MIXED CUT**
Measurements **12.74 X 7.00 X 4.38 MM**

GRADING RESULTS
Carat Weight **2.54 CARATS**
Color Grade **E**
Clarity Grade **VVS 2**

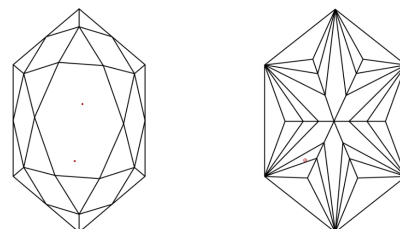
ADDITIONAL GRADING INFORMATION
Polish **EXCELLENT**
Symmetry **EXCELLENT**
Fluorescence **NONE**
Inscription(s) **IGI LG787666447**

Comments: This Laboratory Grown Diamond was created by Chemical Vapor Deposition (CVD) growth process. Type IIa

PROPORTIONS

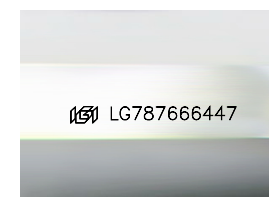


CLARITY CHARACTERISTICS



KEY TO SYMBOLS

Red symbols indicate internal characteristics.
Green symbols indicate external characteristics.



Sample Image Used

COLOR

D E F G H I J Faint Very Light Light

CLARITY

FL	IF	VVS ¹⁻²	VS ¹⁻²	SI ¹⁻²	I ¹⁻³
Flawless	Internally Flawless	Very Very Slightly Included	Very Slightly Included	Slightly Included	Included

