



LABORATORY GROWN DIAMOND REPORT

May 14, 2026
 IGI Report Number **LG787666426**
 Description **LABORATORY GROWN DIAMOND**
 Shape and Cutting Style **KITE STEP CUT**
 Measurements **10.50 X 5.97 X 3.42 MM**

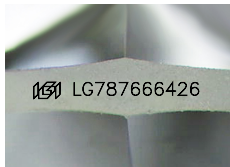
GRADING RESULTS

Carat Weight **0.96 CARAT**
 Color Grade **FANCY INTENSE YELLOW**
 Clarity Grade **VVS 2**

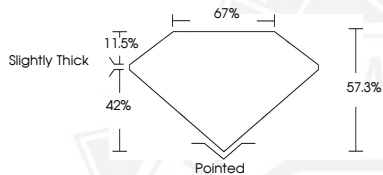
ADDITIONAL GRADING INFORMATION

Polish **VERY GOOD**
 Symmetry **EXCELLENT**
 Fluorescence **NONE**
 Inscription(s) **IGI LG787666426**

Comments: This Laboratory Grown Diamond was created by Chemical Vapor Deposition (CVD) growth process.



Sample Image Used



May 14, 2026
 IGI Report Number **LG787666426**
KITE STEP CUT
LABORATORY GROWN DIAMOND
10.50 X 5.97 X 3.42 MM
 Carat Weight **0.96 CARAT**
 Color Grade **FANCY INTENSE YELLOW**
 Clarity Grade **VVS 2**
 Polish **VERY GOOD**
 Symmetry **EXCELLENT**
 Fluorescence **NONE**
 Inscription(s) **IGI LG787666426**
 Comments: This Laboratory Grown Diamond was created by Chemical Vapor Deposition (CVD) growth process.



May 14, 2026
 IGI Report Number **LG787666426**
KITE STEP CUT
LABORATORY GROWN DIAMOND
10.50 X 5.97 X 3.42 MM
 Carat Weight **0.96 CARAT**
 Color Grade **FANCY INTENSE YELLOW**
 Clarity Grade **VVS 2**
 Polish **VERY GOOD**
 Symmetry **EXCELLENT**
 Fluorescence **NONE**
 Inscription(s) **IGI LG787666426**
 Comments: This Laboratory Grown Diamond was created by Chemical Vapor Deposition (CVD) growth process.



THIS DOCUMENT WAS PRODUCED WITH THE FOLLOWING SECURITY MEASURES: SPECIAL DOCUMENT PAPER, INK SCREENS, WATERMARK, BACKGROUND DESIGNS, HOLOGRAM AND OTHER SECURITY FEATURES NOT LISTED AND DO EXCEED DOCUMENT SECURITY INDUSTRY GUIDELINES.