



ELECTRONIC COPY

LG787666405
Report verification at igi.org



May 13, 2026
IGI Report Number **LG787666405**
Description **LABORATORY GROWN DIAMOND**
Shape and Cutting Style **MARQUISE MODIFIED BRILLIANT**
Measurements **10.17 X 5.26 X 3.19 MM**
GRADING RESULTS
Carat Weight **1.11 CARAT**
Color Grade **FANCY VIVID PINK**
Clarity Grade **VVS 2**

LABORATORY GROWN DIAMOND REPORT

May 13, 2026
IGI Report Number **LG787666405**
Description **LABORATORY GROWN DIAMOND**
Shape and Cutting Style **MARQUISE MODIFIED BRILLIANT**
Measurements **10.17 X 5.26 X 3.19 MM**

GRADING RESULTS

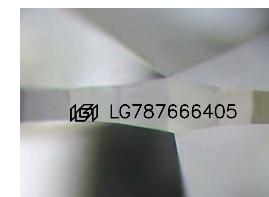
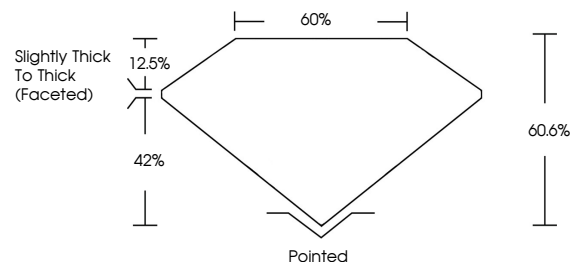
Carat Weight **1.11 CARAT**
Color Grade **FANCY VIVID PINK**
Clarity Grade **VVS 2**

ADDITIONAL GRADING INFORMATION

Polish **EXCELLENT**
Symmetry **EXCELLENT**
Fluorescence **SLIGHT**
Inscription(s) **IGI LG787666405**

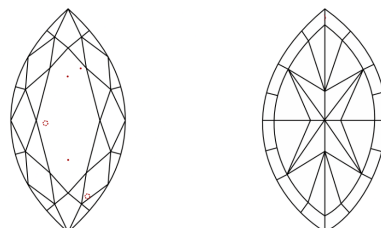
Comments: This Laboratory Grown Diamond was created by Chemical Vapor Deposition (CVD) growth process.
Indications of post-growth treatment.

PROPORTIONS



Sample Image Used

CLARITY CHARACTERISTICS



KEY TO SYMBOLS

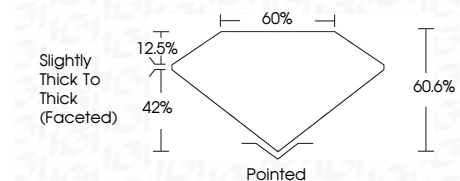
Red symbols indicate internal characteristics.
Green symbols indicate external characteristics.

COLOR

D E F G H I J Faint Very Light Light

CLARITY

FL	IF	VVS ¹⁻²	VS ¹⁻²	SI ¹⁻²	I ¹⁻³
Flawless	Internally Flawless	Very Very Slightly Included	Very Slightly Included	Slightly Included	Included



ADDITIONAL GRADING INFORMATION

Polish **EXCELLENT**
Symmetry **EXCELLENT**
Fluorescence **SLIGHT**
Inscription(s) **IGI LG787666405**
Comments: This Laboratory Grown Diamond was created by Chemical Vapor Deposition (CVD) growth process.
Indications of post-growth treatment.



May 13, 2026
IGI Report No **LG787666405**
MARQUISE MODIFIED BRILLIANT
1.11 CARAT
10.17 X 5.26 X 3.19 MM
Carat Weight
Color Grade **FANCY VIVID PINK**
Clarity Grade **VVS 2**
Depth **42%**
Table **12.5%**
Girdle **Slightly Thick To Thick (Faceted)**
Culet **Pointed**
Polish **EXCELLENT**
Symmetry **EXCELLENT**
Fluorescence **SLIGHT**
Inscription(s) **IGI LG787666405**
Comments: This Laboratory Grown Diamond was created by Chemical Vapor Deposition (CVD) growth process.
Indications of post-growth treatment.