



**ELECTRONIC COPY**

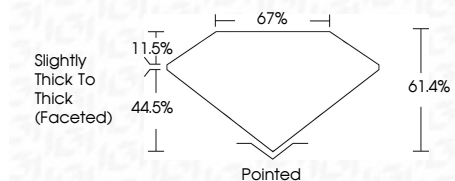
LG787666365  
Report verification at igi.org



May 15, 2026  
IGI Report Number **LG787666365**  
Description **LABORATORY GROWN DIAMOND**  
Shape and Cutting Style **ROUND MODIFIED BRILLIANT**  
Measurements **7.05 - 7.05 X 4.33 MM**

**GRADING RESULTS**

Carat Weight **1.51 CARAT**  
Color Grade **FANCY VIVID PINK**  
Clarity Grade **VVS 2**



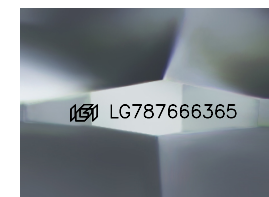
**ADDITIONAL GRADING INFORMATION**

Polish **EXCELLENT**  
Symmetry **EXCELLENT**  
Fluorescence **SLIGHT**  
Inscription(s) **IGI LG787666365**  
Comments: This Laboratory Grown Diamond was created by Chemical Vapor Deposition (CVD) growth process. Indications of post-growth treatment.



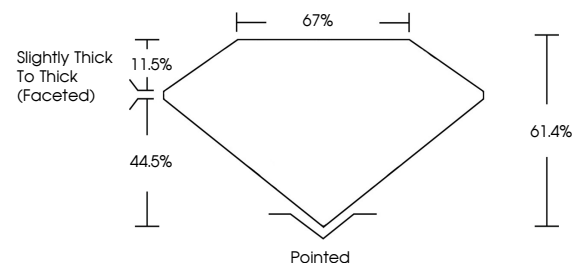
May 15, 2026  
IGI Report No LG787666365  
**ROUND MODIFIED BRILLIANT**  
1.51 CARAT  
Carat Weight  
Color Grade **FANCY VIVID PINK**  
Clarity Grade **VVS 2**  
Depth **61.4%**  
Table **67%**  
Girdle **Slightly Thick To Thick (Faceted)**  
Culet **Pointed**  
Polish **EXCELLENT**  
Symmetry **EXCELLENT**  
Fluorescence **SLIGHT**  
Inscription(s) **IGI LG787666365**

Comments: This Laboratory Grown Diamond was created by Chemical Vapor Deposition (CVD) growth process. Indications of post-growth treatment.

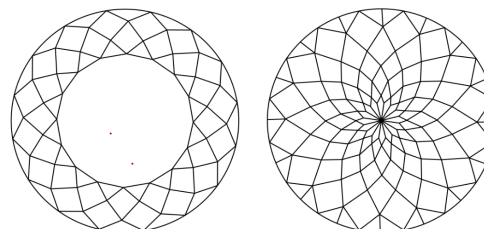


Sample Image Used

**PROPORTIONS**



**CLARITY CHARACTERISTICS**



**KEY TO SYMBOLS**

Red symbols indicate internal characteristics.  
Green symbols indicate external characteristics.

**COLOR**

D E F G H I J Faint Very Light Light

**CLARITY**

FL	IF	VVS <sup>1-2</sup>	VS <sup>1-2</sup>	SI <sup>1-2</sup>	I <sup>1-3</sup>
Flawless	Internally Flawless	Very Very Slightly Included	Very Slightly Included	Slightly Included	Included

