



ELECTRONIC COPY

LG787666358
Report verification at igi.org



May 18, 2026
IGI Report Number **LG787666358**
Description **LABORATORY GROWN DIAMOND**
Shape and Cutting Style **OLD EUROPEAN CUT**
Measurements **6.46 - 6.49 X 4.02 MM**
GRADING RESULTS
Carat Weight **1.13 CARAT**
Color Grade **FANCY BROWN**
Clarity Grade **VVS 2**

May 18, 2026
IGI Report Number **LG787666358**
Description **LABORATORY GROWN DIAMOND**
Shape and Cutting Style **OLD EUROPEAN CUT**
Measurements **6.46 - 6.49 X 4.02 MM**

GRADING RESULTS

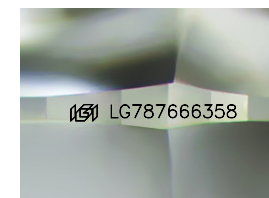
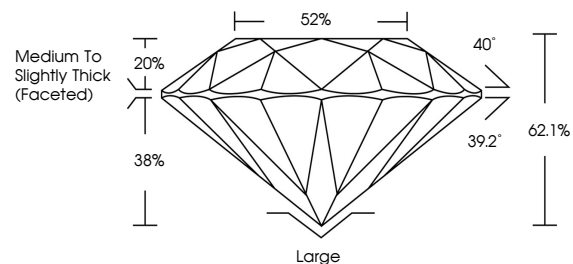
Carat Weight **1.13 CARAT**
Color Grade **FANCY BROWN**
Clarity Grade **VVS 2**

ADDITIONAL GRADING INFORMATION

Polish **EXCELLENT**
Symmetry **EXCELLENT**
Fluorescence **NONE**
Inscription(s) **IGI LG787666358**

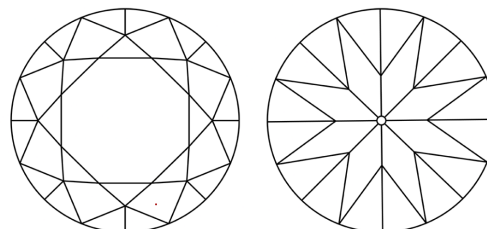
Comments: This Laboratory Grown Diamond was created by Chemical Vapor Deposition (CVD) growth process.
Indications of post-growth treatment.

PROPORTIONS



Sample Image Used

CLARITY CHARACTERISTICS



KEY TO SYMBOLS

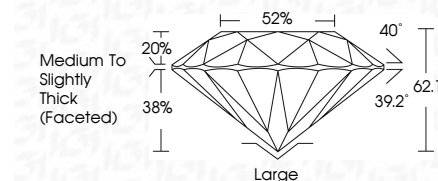
Red symbols indicate internal characteristics.
Green symbols indicate external characteristics.

COLOR

D E F G H I J Faint Very Light Light

CLARITY

FL	IF	VVS ¹⁻²	VS ¹⁻²	SI ¹⁻²	I ¹⁻³
Flawless	Internally Flawless	Very Very Slightly Included	Very Slightly Included	Slightly Included	Included



ADDITIONAL GRADING INFORMATION

Polish **EXCELLENT**
Symmetry **EXCELLENT**
Fluorescence **NONE**
Inscription(s) **IGI LG787666358**
Comments: This Laboratory Grown Diamond was created by Chemical Vapor Deposition (CVD) growth process.
Indications of post-growth treatment.



IGI



May 18, 2026
IGI Report No **LG787666358**
OLD EUROPEAN CUT
1.13 CARAT
Carat Weight
Color Grade **FANCY BROWN**
Clarity Grade **VVS 2**
Depth **62.1%**
Table **52%**
Girdle
Medium to Slightly Thick (Faceted)
Culet **Large**
Polish **EXCELLENT**
Symmetry **EXCELLENT**
Fluorescence **NONE**
Inscription(s) **IGI LG787666358**

Comments: This Laboratory Grown Diamond was created by Chemical Vapor Deposition (CVD) growth process.
Indications of post-growth treatment.