



May 27, 2026

IGI Report Number **LG787666284**

PEAR ROSE CUT
LABORATORY GROWN DIAMOND
7.95 X 4.53 X 1.74 MM
Carat Weight **0.53 CARAT**
Color Grade **FANCY BROWN**
Clarity Grade **VS 1**
Polish **EXCELLENT**
Symmetry **EXCELLENT**
Fluorescence **NONE**
Inscription(s) **IGI LG787666284**

Comments: This Laboratory Grown Diamond was created by Chemical Vapor Deposition (CVD) growth process. Indications of post-growth treatment.

LABORATORY GROWN DIAMOND REPORT

May 27, 2026
IGI Report Number **LG787666284**
Description **LABORATORY GROWN DIAMOND**
Shape and Cutting Style **PEAR ROSE CUT**
Measurements **7.95 X 4.53 X 1.74 MM**

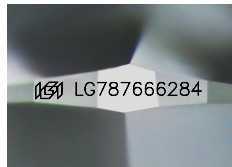
GRADING RESULTS

Carat Weight **0.53 CARAT**
Color Grade **FANCY BROWN**
Clarity Grade **VS 1**

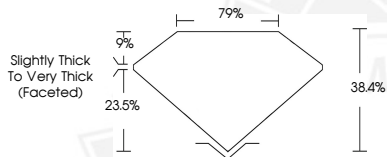
ADDITIONAL GRADING INFORMATION

Polish **EXCELLENT**
Symmetry **EXCELLENT**
Fluorescence **NONE**
Inscription(s) **IGI LG787666284**

Comments: This Laboratory Grown Diamond was created by Chemical Vapor Deposition (CVD) growth process. Indications of post-growth treatment.



Sample Image Used



May 27, 2026

IGI Report Number **LG787666284**

PEAR ROSE CUT
LABORATORY GROWN DIAMOND
7.95 X 4.53 X 1.74 MM
Carat Weight **0.53 CARAT**
Color Grade **FANCY BROWN**
Clarity Grade **VS 1**
Polish **EXCELLENT**
Symmetry **EXCELLENT**
Fluorescence **NONE**
Inscription(s) **IGI LG787666284**

Comments: This Laboratory Grown Diamond was created by Chemical Vapor Deposition (CVD) growth process. Indications of post-growth treatment.



THIS DOCUMENT WAS PRODUCED WITH THE FOLLOWING SECURITY MEASURES: SPECIAL DOCUMENT PAPER, INK SCREENS, WATERMARK, BACKGROUND DESIGNS, HOLOGRAM AND OTHER SECURITY FEATURES NOT LISTED AND DO EXCEED DOCUMENT SECURITY INDUSTRY GUIDELINES.