



ELECTRONIC COPY

LG787666271
Report verification at igi.org



May 23, 2026

IGI Report Number **LG787666271**

Description **LABORATORY GROWN DIAMOND**

Shape and Cutting Style **ROUND ROSE CUT**

Measurements **8.87 - 8.96 X 1.71 MM**

GRADING RESULTS

Carat Weight **1.25 CARAT**

Color Grade **LIGHT BROWN**

Clarity Grade **VVS 2**

May 23, 2026

IGI Report Number **LG787666271**

Description **LABORATORY GROWN DIAMOND**

Shape and Cutting Style **ROUND ROSE CUT**

Measurements **8.87 - 8.96 X 1.71 MM**

GRADING RESULTS

Carat Weight **1.25 CARAT**

Color Grade **LIGHT BROWN**

Clarity Grade **VVS 2**

ADDITIONAL GRADING INFORMATION

Polish **VERY GOOD**

Symmetry **VERY GOOD**

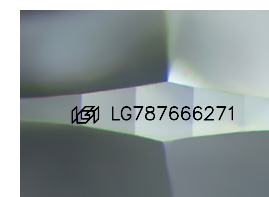
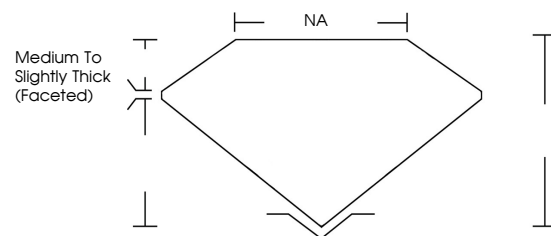
Fluorescence **NONE**

Inscription(s) **IGI LG787666271**

Comments: This Laboratory Grown Diamond was created by Chemical Vapor Deposition (CVD) growth process.

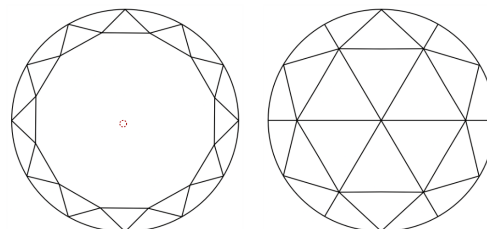
Indications of post-growth treatment.

PROPORTIONS



Sample Image Used

CLARITY CHARACTERISTICS



KEY TO SYMBOLS

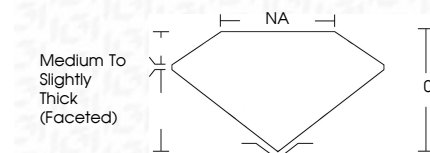
Red symbols indicate internal characteristics.
Green symbols indicate external characteristics.

COLOR

D E F G H I J Faint Very Light Light

CLARITY

FL	IF	VVS ¹⁻²	VS ¹⁻²	SI ¹⁻²	I ¹⁻³
Flawless	Internally Flawless	Very Very Slightly Included	Very Slightly Included	Slightly Included	Included



ADDITIONAL GRADING INFORMATION

Polish **VERY GOOD**

Symmetry **VERY GOOD**

Fluorescence **NONE**

Inscription(s) **IGI LG787666271**

Comments: This Laboratory Grown Diamond was created by Chemical Vapor Deposition (CVD) growth process. Indications of post-growth treatment.



IGI



May 23, 2026
IGI Report No LG787666271
ROUND ROSE CUT
8.87 - 8.96 X 1.71 MM
1.25 CARAT
Carat Weight
Color Grade
Light Brown
VVS 2
Clarity Grade
Depth
8%
Table
6%
Girdle
Medium to Slightly Thick (Faceted)
Culet
VERY GOOD
Polish
VERY GOOD
Symmetry
VERY GOOD
Fluorescence
NONE
Inscription(s)
IGI LG787666271

Comments: This Laboratory Grown Diamond was created by Chemical Vapor Deposition (CVD) growth process. Indications of post-growth treatment.