



ELECTRONIC COPY

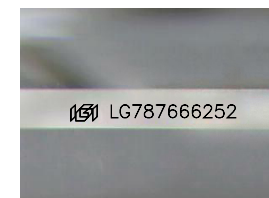
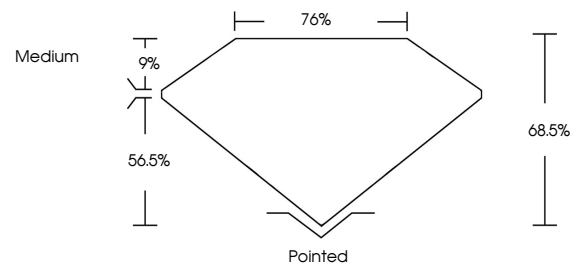
LG787666252
Report verification at igi.org



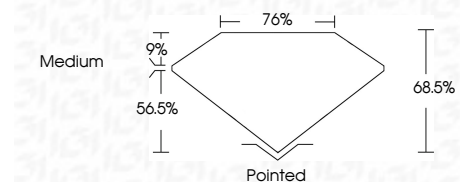
May 21, 2026
IGI Report Number **LG787666252**
Description **LABORATORY GROWN DIAMOND**
Shape and Cutting Style **PRINCESS CUT**
Measurements **8.07 X 7.84 X 5.37 MM**
GRADING RESULTS
Carat Weight **3.00 CARATS**
Color Grade **FANCY VIVID BLUE**
Clarity Grade **VVS 2**

May 21, 2026
IGI Report Number **LG787666252**
Description **LABORATORY GROWN DIAMOND**
Shape and Cutting Style **PRINCESS CUT**
Measurements **8.07 X 7.84 X 5.37 MM**

PROPORTIONS



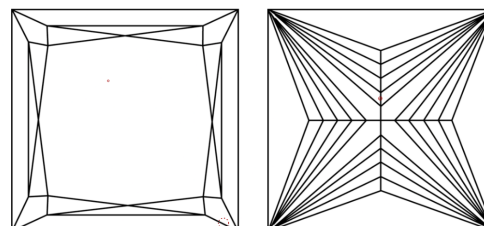
Sample Image Used



GRADING RESULTS

Carat Weight **3.00 CARATS**
Color Grade **FANCY VIVID BLUE**
Clarity Grade **VVS 2**

CLARITY CHARACTERISTICS



COLOR

D E F G H I J Faint Very Light Light

CLARITY

FL	IF	VVS ¹⁻²	VS ¹⁻²	SI ¹⁻²	I ¹⁻³
Flawless	Internally Flawless	Very Very Slightly Included	Very Slightly Included	Slightly Included	Included

ADDITIONAL GRADING INFORMATION

Polish **EXCELLENT**
Symmetry **EXCELLENT**
Fluorescence **NONE**
Inscription(s) **IGI LG787666252**
Comments: This Laboratory Grown Diamond was created by Chemical Vapor Deposition (CVD) growth process.
Indications of post-growth treatment.

ADDITIONAL GRADING INFORMATION

Polish **EXCELLENT**
Symmetry **EXCELLENT**
Fluorescence **NONE**
Inscription(s) **IGI LG787666252**

Comments: This Laboratory Grown Diamond was created by Chemical Vapor Deposition (CVD) growth process.
Indications of post-growth treatment.

KEY TO SYMBOLS

Red symbols indicate internal characteristics.
Green symbols indicate external characteristics.



May 21, 2026
IGI Report No **LG787666252**
PRINCESS CUT
3.00 CARATS
Carat Weight **FANCY VIVID BLUE**
Color Grade **VVS 2**
Depth **68.5%**
Table **76%**
Girdle **Medium**
Culet **Pointed**
Polish **EXCELLENT**
Symmetry **EXCELLENT**
Fluorescence **NONE**
Inscription(s) **IGI LG787666252**

Comments: This Laboratory Grown Diamond was created by Chemical Vapor Deposition (CVD) growth process.
Indications of post-growth treatment.