



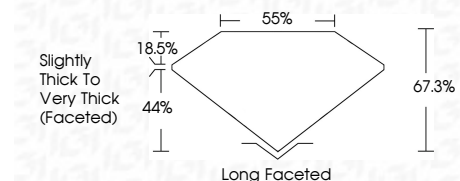
ELECTRONIC COPY

LG787666226
Report verification at igi.org



May 29, 2026
IGI Report Number **LG787666226**
Description **LABORATORY GROWN DIAMOND**
Shape and Cutting Style **OVAL OLD EUROPEAN CUT**
Measurements **9.58 X 6.51 X 4.38 MM**

GRADING RESULTS
Carat Weight **2.00 CARATS**
Color Grade **FANCY LIGHT YELLOW**
Clarity Grade **VS 1**



ADDITIONAL GRADING INFORMATION
Polish **EXCELLENT**
Symmetry **EXCELLENT**
Fluorescence **NONE**
Inscription(s) **IGI LG787666226**
Comments: This Laboratory Grown Diamond was created by Chemical Vapor Deposition (CVD) growth process.



May 29, 2026
IGI Report No LG787666226
OVAL OLD EUROPEAN CUT
9.58 X 6.51 X 4.38 MM
2.00 CARATS
FANCY LIGHT YELLOW
VS 1
67.3%
44%
Slightly Thick To Very Thick (Faceted)
Long Faceted
EXCELLENT
EXCELLENT
NONE
IGI LG787666226
Comments: This Laboratory Grown Diamond was created by Chemical Vapor Deposition (CVD) growth process.

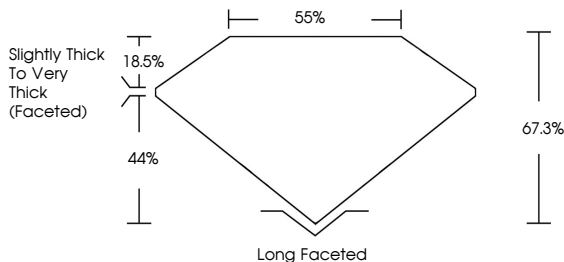
May 29, 2026
IGI Report Number **LG787666226**
Description **LABORATORY GROWN DIAMOND**
Shape and Cutting Style **OVAL OLD EUROPEAN CUT**
Measurements **9.58 X 6.51 X 4.38 MM**

GRADING RESULTS
Carat Weight **2.00 CARATS**
Color Grade **FANCY LIGHT YELLOW**
Clarity Grade **VS 1**

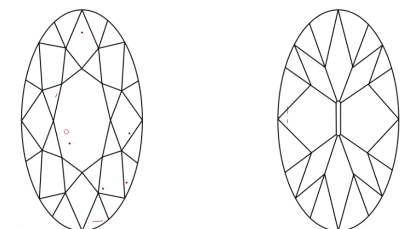
ADDITIONAL GRADING INFORMATION
Polish **EXCELLENT**
Symmetry **EXCELLENT**
Fluorescence **NONE**
Inscription(s) **IGI LG787666226**

Comments: This Laboratory Grown Diamond was created by Chemical Vapor Deposition (CVD) growth process.

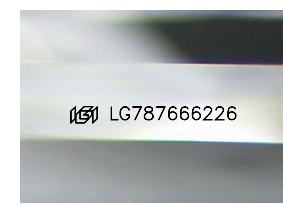
PROPORTIONS



CLARITY CHARACTERISTICS



KEY TO SYMBOLS
Red symbols indicate internal characteristics.
Green symbols indicate external characteristics.



Sample Image Used

COLOR

D	E	F	G	H	I	J	Faint	Very Light	Light
---	---	---	---	---	---	---	-------	------------	-------

CLARITY

FL	IF	VS ¹⁻²	VS ¹⁻²	SI ¹⁻²	I ¹⁻³
Flawless	Internally Flawless	Very Very Slightly Included	Very Slightly Included	Slightly Included	Included

