



**ELECTRONIC COPY**

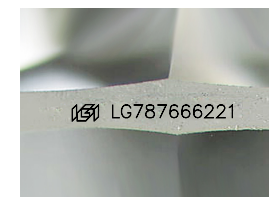
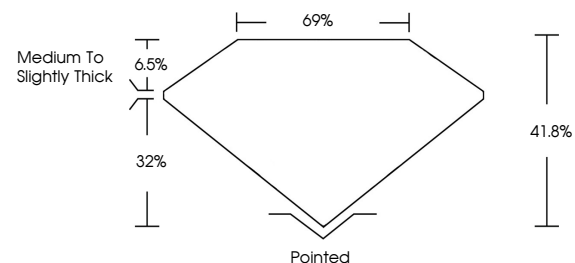
LG787666221  
Report verification at igi.org



May 28, 2026  
IGI Report Number **LG787666221**  
Description **LABORATORY GROWN DIAMOND**  
Shape and Cutting Style **TRIANGULAR BRILLIANT**  
Measurements **8.25 X 9.42 X 3.94 MM**  
**GRADING RESULTS**  
Carat Weight **1.35 CARAT**  
Color Grade **FANCY VIVID GREEN**  
Clarity Grade **VVS 2**

May 28, 2026  
IGI Report Number **LG787666221**  
Description **LABORATORY GROWN DIAMOND**  
Shape and Cutting Style **TRIANGULAR BRILLIANT**  
Measurements **8.25 X 9.42 X 3.94 MM**

**PROPORTIONS**

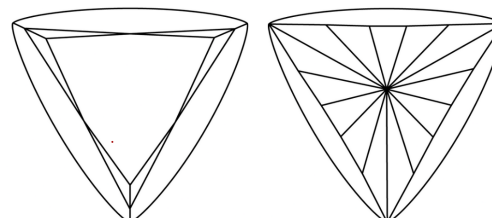


Sample Image Used

**GRADING RESULTS**

Carat Weight **1.35 CARAT**  
Color Grade **FANCY VIVID GREEN**  
Clarity Grade **VVS 2**

**CLARITY CHARACTERISTICS**



**KEY TO SYMBOLS**

Red symbols indicate internal characteristics.  
Green symbols indicate external characteristics.

**ADDITIONAL GRADING INFORMATION**

Polish **VERY GOOD**  
Symmetry **EXCELLENT**  
Fluorescence **VERY SLIGHT**  
Inscription(s) **IGI LG787666221**

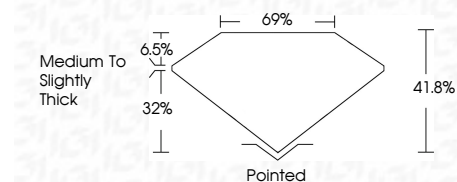
Comments: This Laboratory Grown Diamond was created by Chemical Vapor Deposition (CVD) growth process.  
Indications of post-growth treatment.

**COLOR**

D E F G H I J Faint Very Light Light

**CLARITY**

FL	IF	VVS <sup>1-2</sup>	VS <sup>1-2</sup>	SI <sup>1-2</sup>	I <sup>1-3</sup>
Flawless	Internally Flawless	Very Very Slightly Included	Very Slightly Included	Slightly Included	Included



**ADDITIONAL GRADING INFORMATION**

Polish **VERY GOOD**  
Symmetry **EXCELLENT**  
Fluorescence **VERY SLIGHT**  
Inscription(s) **IGI LG787666221**  
Comments: This Laboratory Grown Diamond was created by Chemical Vapor Deposition (CVD) growth process.  
Indications of post-growth treatment.



May 28, 2026  
IGI Report No LG787666221  
**TRIANGULAR BRILLIANT**  
8.25 X 9.42 X 3.94 MM  
1.35 CARAT  
FANCY VIVID GREEN  
VVS 2  
41.8%  
6.5%  
Medium to Slightly Thick  
Pointed  
VERY GOOD  
EXCELLENT  
VERY SLIGHT  
IGI LG787666221  
Comments: This Laboratory Grown Diamond was created by Chemical Vapor Deposition (CVD) growth process.  
Indications of post-growth treatment.