



ELECTRONIC COPY

LG787666219
Report verification at igi.org



May 29, 2026
IGI Report Number **LG787666219**
Description **LABORATORY GROWN DIAMOND**
Shape and Cutting Style **HEXADECAGONAL MODIFIED BRILLIANT**
Measurements **11.82 X 6.20 X 3.93 MM**
GRADING RESULTS
Carat Weight **1.95 CARAT**
Color Grade **D**
Clarity Grade **VVS 2**

LABORATORY GROWN DIAMOND REPORT

May 29, 2026
IGI Report Number **LG787666219**
Description **LABORATORY GROWN DIAMOND**
Shape and Cutting Style **HEXADECAGONAL MODIFIED BRILLIANT**
Measurements **11.82 X 6.20 X 3.93 MM**

GRADING RESULTS

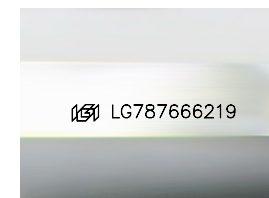
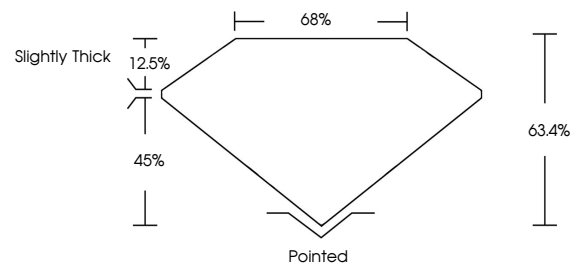
Carat Weight **1.95 CARAT**
Color Grade **D**
Clarity Grade **VVS 2**

ADDITIONAL GRADING INFORMATION

Polish **VERY GOOD**
Symmetry **EXCELLENT**
Fluorescence **NONE**
Inscription(s) **IGI LG787666219**

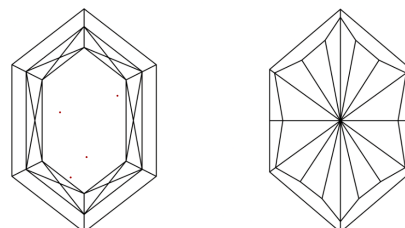
Comments: This Laboratory Grown Diamond was created by Chemical Vapor Deposition (CVD) growth process.
Type IIa

PROPORTIONS



Sample Image Used

CLARITY CHARACTERISTICS



KEY TO SYMBOLS

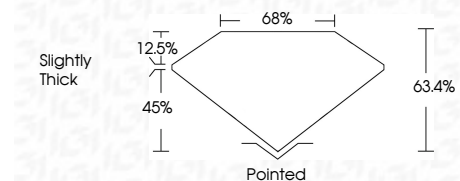
Red symbols indicate internal characteristics.
Green symbols indicate external characteristics.

COLOR

D E F G H I J Faint Very Light Light

CLARITY

| FL | IF | VVS ¹⁻² | VS ¹⁻² | SI ¹⁻² | I ¹⁻³ |
|----------|---------------------|-----------------------------|------------------------|-------------------|------------------|
| Flawless | Internally Flawless | Very Very Slightly Included | Very Slightly Included | Slightly Included | Included |



ADDITIONAL GRADING INFORMATION

Polish **VERY GOOD**
Symmetry **EXCELLENT**
Fluorescence **NONE**
Inscription(s) **IGI LG787666219**
Comments: This Laboratory Grown Diamond was created by Chemical Vapor Deposition (CVD) growth process.
Type IIa



May 29, 2026
IGI Report No LG787666219
HEXADECAGONAL MODIFIED BRILLIANT
11.82 X 6.20 X 3.93 MM
Carat Weight 1.95 CARAT
Color Grade D
Clarity Grade VVS 2
Table 68.4%
Girdle 45%
Slightly Thick
Culet Pointed
Polish VERY GOOD
Symmetry EXCELLENT
Fluorescence NONE
Inscription(s) IGI LG787666219
Comments: This Laboratory Grown Diamond was created by Chemical Vapor Deposition (CVD) growth process.
Type IIa