



LABORATORY GROWN DIAMOND REPORT

May 27, 2026
 IGI Report Number **LG787666204**
 Description **LABORATORY GROWN DIAMOND**
 Shape and Cutting Style **OLD EUROPEAN CUT**
 Measurements **5.40 - 5.44 X 3.18 MM**

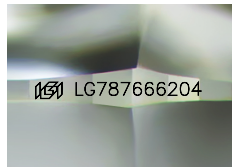
GRADING RESULTS

Carat Weight **0.64 CARAT**
 Color Grade **L**
 Clarity Grade **VVS 2**

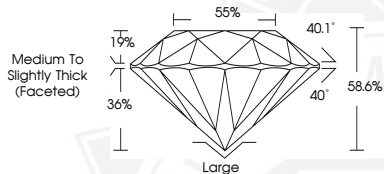
ADDITIONAL GRADING INFORMATION

Polish **EXCELLENT**
 Symmetry **EXCELLENT**
 Fluorescence **NONE**
 Inscription(s) **IGI LG787666204**

Comments: This Laboratory Grown Diamond was created by Chemical Vapor Deposition (CVD) growth process. Type IIa Faint Brown



Sample Image Used



May 27, 2026

IGI Report Number LG787666204
OLD EUROPEAN CUT
LABORATORY GROWN DIAMOND
5.40 - 5.44 X 3.18 MM
 Carat Weight **0.64 CARAT**
 Color Grade **L**
 Clarity Grade **VVS 2**
 Polish **EXCELLENT**
 Symmetry **EXCELLENT**
 Fluorescence **NONE**
 Inscription(s) **IGI LG787666204**

Comments: This Laboratory Grown Diamond was created by Chemical Vapor Deposition (CVD) growth process. Type IIa Faint Brown



May 27, 2026

IGI Report Number LG787666204
OLD EUROPEAN CUT
LABORATORY GROWN DIAMOND
5.40 - 5.44 X 3.18 MM
 Carat Weight **0.64 CARAT**
 Color Grade **L**
 Clarity Grade **VVS 2**
 Polish **EXCELLENT**
 Symmetry **EXCELLENT**
 Fluorescence **NONE**
 Inscription(s) **IGI LG787666204**

Comments: This Laboratory Grown Diamond was created by Chemical Vapor Deposition (CVD) growth process. Type IIa Faint Brown



THIS DOCUMENT WAS PRODUCED WITH THE FOLLOWING SECURITY MEASURES: SPECIAL DOCUMENT PAPER, INK SCREENS, WATERMARK, BACKGROUND DESIGNS, HOLOGRAM AND OTHER SECURITY FEATURES NOT LISTED AND DO EXCEED DOCUMENT SECURITY INDUSTRY GUIDELINES.