



**ELECTRONIC COPY**

LG787666202  
Report verification at igi.org



May 29, 2026  
IGI Report Number **LG787666202**  
Description **LABORATORY GROWN DIAMOND**  
Shape and Cutting Style **PEAR MIXED CUT**  
Measurements **14.89 X 5.06 X 2.71 MM**  
**GRADING RESULTS**  
Carat Weight **1.47 CARAT**  
Color Grade **FANCY INTENSE YELLOW**  
Clarity Grade **VS 2**

May 29, 2026  
IGI Report Number **LG787666202**  
Description **LABORATORY GROWN DIAMOND**  
Shape and Cutting Style **PEAR MIXED CUT**  
Measurements **14.89 X 5.06 X 2.71 MM**

**GRADING RESULTS**

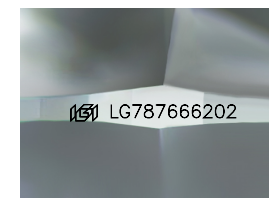
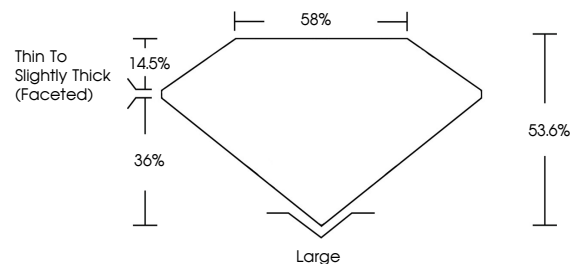
Carat Weight **1.47 CARAT**  
Color Grade **FANCY INTENSE YELLOW**  
Clarity Grade **VS 2**

**ADDITIONAL GRADING INFORMATION**

Polish **VERY GOOD**  
Symmetry **VERY GOOD**  
Fluorescence **NONE**  
Inscription(s) **IGI LG787666202**

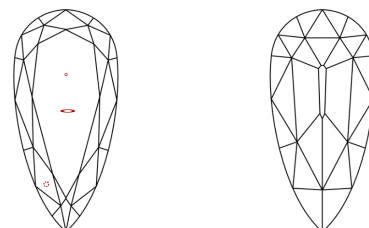
Comments: This Laboratory Grown Diamond was created by Chemical Vapor Deposition (CVD) growth process.

**PROPORTIONS**



Sample Image Used

**CLARITY CHARACTERISTICS**



**KEY TO SYMBOLS**

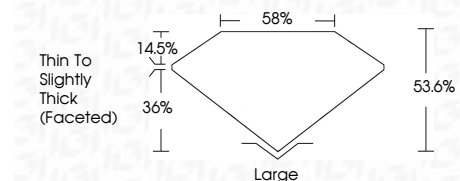
Red symbols indicate internal characteristics.  
Green symbols indicate external characteristics.

**COLOR**

D E F G H I J Faint Very Light Light

**CLARITY**

FL	IF	VS <sup>1-2</sup>	VS <sup>1-2</sup>	SI <sup>1-2</sup>	I <sup>1-3</sup>
Flawless	Internally Flawless	Very Very Slightly Included	Very Slightly Included	Slightly Included	Included



**ADDITIONAL GRADING INFORMATION**

Polish **VERY GOOD**  
Symmetry **VERY GOOD**  
Fluorescence **NONE**  
Inscription(s) **IGI LG787666202**  
Comments: This Laboratory Grown Diamond was created by Chemical Vapor Deposition (CVD) growth process.



May 29, 2026  
IGI Report No **LG787666202**  
**PEAR MIXED CUT**  
Carat Weight **1.47 CARAT**  
Color Grade **FANCY INTENSE YELLOW**  
Clarity Grade **VS 2**  
Depth **53.6%**  
Table **58%**  
Girdle **Thin To Slightly Thick (Faceted)**  
Culet **Large**  
Polish **VERY GOOD**  
Symmetry **VERY GOOD**  
Fluorescence **NONE**  
Inscription(s) **IGI LG787666202**  
Comments: This Laboratory Grown Diamond was created by Chemical Vapor Deposition (CVD) growth process.