



ELECTRONIC COPY

LG787666134
Report verification at igi.org



May 28, 2026

IGI Report Number **LG787666134**

Description **LABORATORY GROWN DIAMOND**

Shape and Cutting Style **FLOWER MODIFIED BRILLIANT**

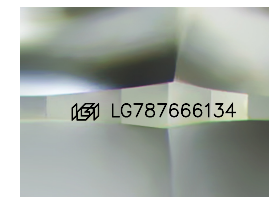
Measurements **6.35 X 6.13 X 4.49 MM**

GRADING RESULTS

Carat Weight **1.41 CARAT**

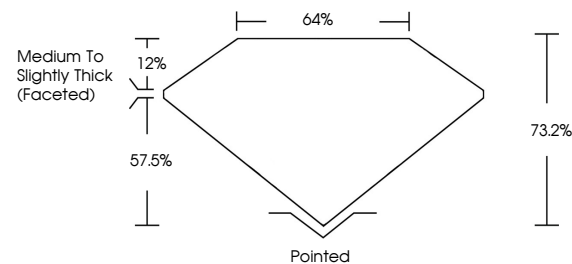
Color Grade **FANCY INTENSE PINK**

Clarity Grade **VVS 2**

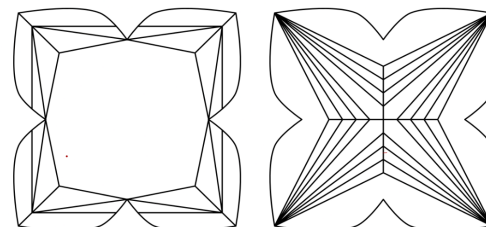


Sample Image Used

PROPORTIONS



CLARITY CHARACTERISTICS



KEY TO SYMBOLS

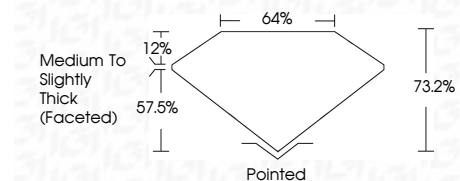
Red symbols indicate internal characteristics.
Green symbols indicate external characteristics.

COLOR

D E F G H I J Faint Very Light Light

CLARITY

| FL | IF | VVS ¹⁻² | VS ¹⁻² | SI ¹⁻² | I ¹⁻³ |
|----------|---------------------|-----------------------------|------------------------|-------------------|------------------|
| Flawless | Internally Flawless | Very Very Slightly Included | Very Slightly Included | Slightly Included | Included |



ADDITIONAL GRADING INFORMATION

Polish **EXCELLENT**

Symmetry **EXCELLENT**

Fluorescence **SLIGHT**

Inscription(s) **IGI LG787666134**

Comments: This Laboratory Grown Diamond was created by Chemical Vapor Deposition (CVD) growth process. Indications of post-growth treatment.



May 28, 2026
IGI Report No LG787666134
FLOWER MODIFIED BRILLIANT
6.35 X 6.13 X 4.49 MM
1.41 CARAT
FANCY INTENSE PINK
VVS 2
73.2%
64%
Medium to Slightly Thick (Faceted)
Pointed
EXCELLENT
EXCELLENT
SLIGHT
IGI LG787666134

Comments: This Laboratory Grown Diamond was created by Chemical Vapor Deposition (CVD) growth process. Indications of post-growth treatment.