



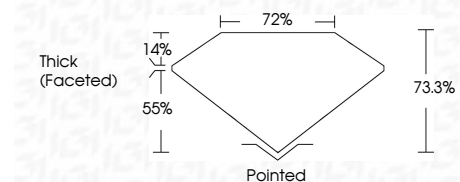
ELECTRONIC COPY

LG787666081
Report verification at igi.org



June 3, 2026
IGI Report Number **LG787666081**
Description **LABORATORY GROWN DIAMOND**
Shape and Cutting Style **FLOWER MODIFIED BRILLIANT**
Measurements **7.37 X 7.19 X 5.27 MM**

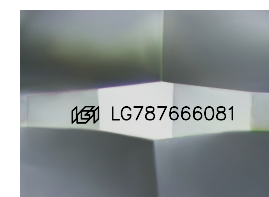
GRADING RESULTS
Carat Weight **2.45 CARATS**
Color Grade **FANCY VIVID GREEN**
Clarity Grade **VVS 2**



ADDITIONAL GRADING INFORMATION
Polish **EXCELLENT**
Symmetry **EXCELLENT**
Fluorescence **NONE**
Inscription(s) **IGI LG787666081**
Comments: This Laboratory Grown Diamond was created by Chemical Vapor Deposition (CVD) growth process. Indications of post-growth treatment.

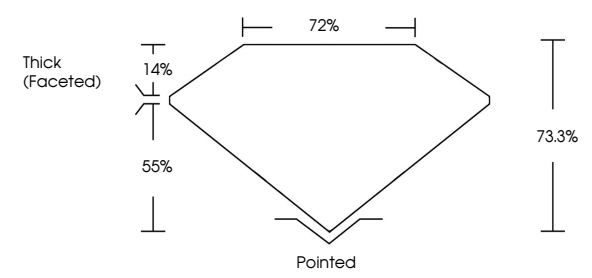


June 3, 2026
IGI Report No **LG787666081**
FLOWER MODIFIED BRILLIANT
2.45 CARATS
Carat Weight **FANCY VIVID GREEN**
Color Grade **VVS 2**
Depth **73.3%**
Table **72%**
Girdle **Thick (Faceted)**
Culet **Pointed**
Polish **EXCELLENT**
Symmetry **EXCELLENT**
Fluorescence **NONE**
Inscription(s) **IGI LG787666081**
Comments: This Laboratory Grown Diamond was created by Chemical Vapor Deposition (CVD) growth process. Indications of post-growth treatment.

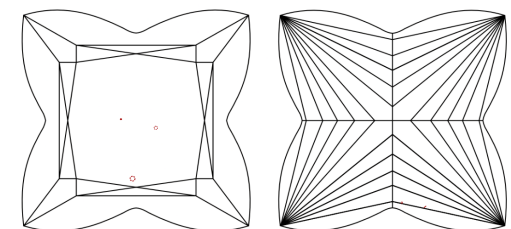


Sample Image Used

PROPORTIONS



CLARITY CHARACTERISTICS



KEY TO SYMBOLS
Red symbols indicate internal characteristics.
Green symbols indicate external characteristics.

COLOR

D	E	F	G	H	I	J	Faint	Very Light	Light
---	---	---	---	---	---	---	-------	------------	-------

CLARITY

FL	IF	VVS ¹⁻²	VS ¹⁻²	SI ¹⁻²	I ¹⁻³
Flawless	Internally Flawless	Very Very Slightly Included	Very Slightly Included	Slightly Included	Included

