



**ELECTRONIC COPY**

LG787666063  
Report verification at igi.org



June 1, 2026  
IGI Report Number **LG787666063**  
Description **LABORATORY GROWN DIAMOND**  
Shape and Cutting Style **CUSHION MODIFIED BRILLIANT**  
Measurements **5.73 X 5.36 X 3.68 MM**  
**GRADING RESULTS**  
Carat Weight **1.05 CARAT**  
Color Grade **FANCY VIVID PINK**  
Clarity Grade **VS 1**

**LABORATORY GROWN DIAMOND REPORT**

June 1, 2026  
IGI Report Number **LG787666063**  
Description **LABORATORY GROWN DIAMOND**  
Shape and Cutting Style **CUSHION MODIFIED BRILLIANT**  
Measurements **5.73 X 5.36 X 3.68 MM**

**GRADING RESULTS**

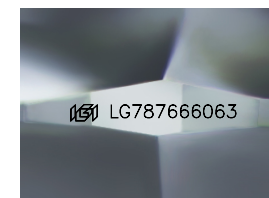
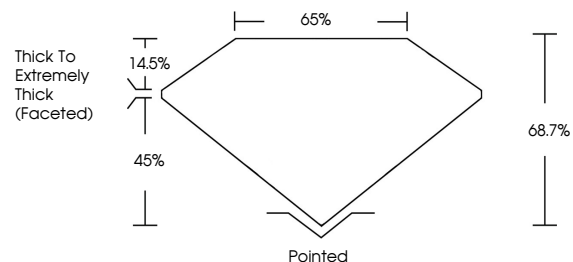
Carat Weight **1.05 CARAT**  
Color Grade **FANCY VIVID PINK**  
Clarity Grade **VS 1**

**ADDITIONAL GRADING INFORMATION**

Polish **VERY GOOD**  
Symmetry **VERY GOOD**  
Fluorescence **SLIGHT**  
Inscription(s) **IGI LG787666063**

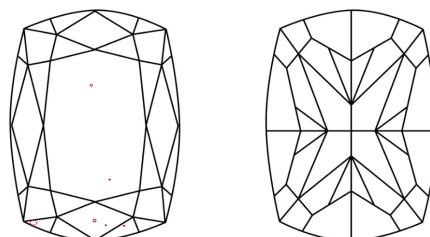
Comments: This Laboratory Grown Diamond was created by Chemical Vapor Deposition (CVD) growth process.  
Indications of post-growth treatment.

**PROPORTIONS**



Sample Image Used

**CLARITY CHARACTERISTICS**



**KEY TO SYMBOLS**

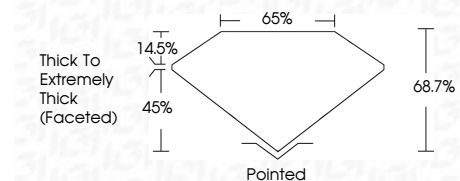
Red symbols indicate internal characteristics.  
Green symbols indicate external characteristics.

**COLOR**

D E F G H I J Faint Very Light Light

**CLARITY**

FL	IF	VS <sup>1-2</sup>	VS <sup>1-2</sup>	SI <sup>1-2</sup>	I <sup>1-3</sup>
Flawless	Internally Flawless	Very Very Slightly Included	Very Slightly Included	Slightly Included	Included



**ADDITIONAL GRADING INFORMATION**

Polish **VERY GOOD**  
Symmetry **VERY GOOD**  
Fluorescence **SLIGHT**  
Inscription(s) **IGI LG787666063**  
Comments: This Laboratory Grown Diamond was created by Chemical Vapor Deposition (CVD) growth process.  
Indications of post-growth treatment.



June 1, 2026  
IGI Report No LG787666063  
**CUSHION MODIFIED BRILLIANT**  
5.73 X 5.36 X 3.68 MM  
1.05 CARAT  
FANCY VIVID PINK  
VS 1  
68.7%  
45%  
Thick To Extremely Thick (Faceted)  
Pointed  
VERY GOOD  
VERY GOOD  
SLIGHT  
IGI LG787666063  
Comments: This Laboratory Grown Diamond was created by Chemical Vapor Deposition (CVD) growth process.  
Indications of post-growth treatment.