



ELECTRONIC COPY

LG787666036
Report verification at igi.org



May 29, 2026
IGI Report Number **LG787666036**
Description **LABORATORY GROWN DIAMOND**
Shape and Cutting Style **PRINCESS CUT**
Measurements **7.73 X 7.69 X 5.54 MM**
GRADING RESULTS
Carat Weight **3.01 CARATS**
Color Grade **FANCY VIVID GREEN**
Clarity Grade **VS 1**

LABORATORY GROWN DIAMOND REPORT

May 29, 2026
IGI Report Number **LG787666036**
Description **LABORATORY GROWN DIAMOND**
Shape and Cutting Style **PRINCESS CUT**
Measurements **7.73 X 7.69 X 5.54 MM**

GRADING RESULTS

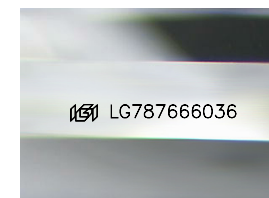
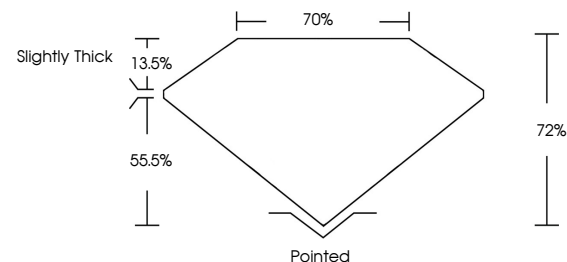
Carat Weight **3.01 CARATS**
Color Grade **FANCY VIVID GREEN**
Clarity Grade **VS 1**

ADDITIONAL GRADING INFORMATION

Polish **EXCELLENT**
Symmetry **VERY GOOD**
Fluorescence **VERY SLIGHT**
Inscription(s) **IGI LG787666036**

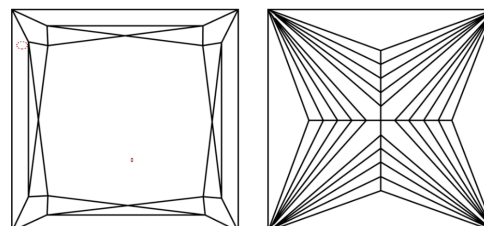
Comments: This Laboratory Grown Diamond was created by Chemical Vapor Deposition (CVD) growth process.
Indications of post-growth treatment.

PROPORTIONS



Sample Image Used

CLARITY CHARACTERISTICS



KEY TO SYMBOLS

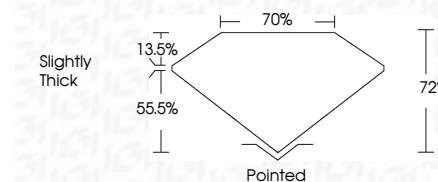
Red symbols indicate internal characteristics.
Green symbols indicate external characteristics.

COLOR

D E F G H I J Faint Very Light Light

CLARITY

FL	IF	VS ¹⁻²	VS ¹⁻²	SI ¹⁻²	I ¹⁻³
Flawless	Internally Flawless	Very Very Slightly Included	Very Slightly Included	Slightly Included	Included



ADDITIONAL GRADING INFORMATION

Polish **EXCELLENT**
Symmetry **VERY GOOD**
Fluorescence **VERY SLIGHT**
Inscription(s) **IGI LG787666036**
Comments: This Laboratory Grown Diamond was created by Chemical Vapor Deposition (CVD) growth process.
Indications of post-growth treatment.



May 29, 2026
IGI Report No. **LG787666036**
PRINCESS CUT

3.01 CARATS
Carat Weight
FANCY VIVID GREEN
Color Grade

VS 1
Clarity Grade

7.73 X 7.69 X 5.54 MM
Depth
72%
Table
70%
Girdle
Slightly Thick

Pointed
Culet
EXCELLENT
Polish
VERY GOOD
Symmetry
VERY SLIGHT
Fluorescence
Inscription(s)
IGI LG787666036

Comments: This Laboratory Grown Diamond was created by Chemical Vapor Deposition (CVD) growth process.
Indications of post-growth treatment.