



**ELECTRONIC COPY**

LG787666022  
Report verification at igi.org



June 4, 2026

IGI Report Number **LG787666022**

Description **LABORATORY GROWN DIAMOND**

Shape and Cutting Style **PEAR ROSE CUT**

Measurements **13.05 X 7.84 X 1.87 MM**

**GRADING RESULTS**

Carat Weight **1.81 CARAT**

Color Grade **FANCY INTENSE PINK**

Clarity Grade **VS 1**

June 4, 2026  
IGI Report Number **LG787666022**  
Description **LABORATORY GROWN DIAMOND**  
Shape and Cutting Style **PEAR ROSE CUT**  
Measurements **13.05 X 7.84 X 1.87 MM**

**GRADING RESULTS**

Carat Weight **1.81 CARAT**

Color Grade **FANCY INTENSE PINK**

Clarity Grade **VS 1**

**ADDITIONAL GRADING INFORMATION**

Polish **EXCELLENT**

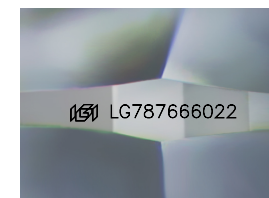
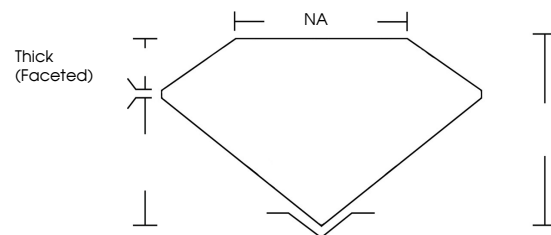
Symmetry **EXCELLENT**

Fluorescence **SLIGHT**

Inscription(s) **IGI LG787666022**

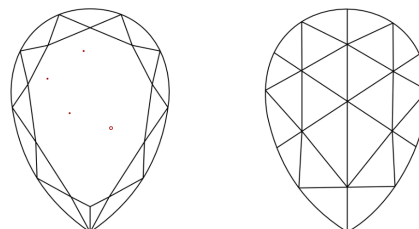
Comments: This Laboratory Grown Diamond was created by Chemical Vapor Deposition (CVD) growth process.  
Indications of post-growth treatment.

**PROPORTIONS**



Sample Image Used

**CLARITY CHARACTERISTICS**



**KEY TO SYMBOLS**

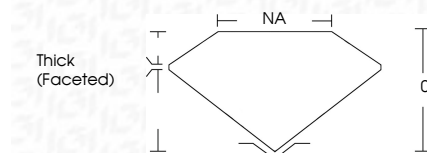
Red symbols indicate internal characteristics.  
Green symbols indicate external characteristics.

**COLOR**

D E F G H I J Faint Very Light Light

**CLARITY**

FL	IF	VS <sup>1-2</sup>	VS <sup>1-2</sup>	SI <sup>1-2</sup>	I <sup>1-3</sup>
Flawless	Internally Flawless	Very Very Slightly Included	Very Slightly Included	Slightly Included	Included



**ADDITIONAL GRADING INFORMATION**

Polish **EXCELLENT**

Symmetry **EXCELLENT**

Fluorescence **SLIGHT**

Inscription(s) **IGI LG787666022**

Comments: This Laboratory Grown Diamond was created by Chemical Vapor Deposition (CVD) growth process.  
Indications of post-growth treatment.



June 4, 2026  
IGI Report No LG787666022  
PEAR ROSE CUT

1.81 CARAT  
FANCY INTENSE PINK  
VS 1  
13.05 X 7.84 X 1.87 MM  
Color Grade  
Clarity Grade  
Depth  
Table  
Girdle  
Thick (Faceted)

EXCELLENT  
EXCELLENT  
SLIGHT  
IGI LG787666022

Comments: This Laboratory Grown Diamond was created by Chemical Vapor Deposition (CVD) growth process.  
Indications of post-growth treatment.