



**ELECTRONIC COPY**

LG787666019  
Report verification at igi.org



June 8, 2026  
IGI Report Number **LG787666019**  
Description **LABORATORY GROWN DIAMOND**  
Shape and Cutting Style **PEAR ROSE CUT**  
Measurements **14.49 X 8.74 X 1.75 MM**  
**GRADING RESULTS**  
Carat Weight **1.95 CARAT**  
Color Grade **FANCY INTENSE PINK**  
Clarity Grade **VS 1**

June 8, 2026  
IGI Report Number **LG787666019**  
Description **LABORATORY GROWN DIAMOND**  
Shape and Cutting Style **PEAR ROSE CUT**  
Measurements **14.49 X 8.74 X 1.75 MM**

**GRADING RESULTS**

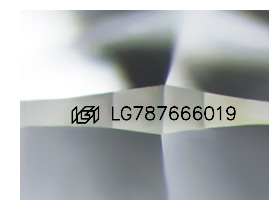
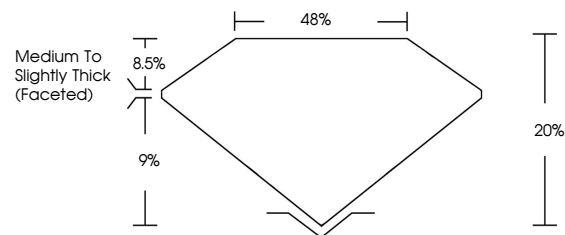
Carat Weight **1.95 CARAT**  
Color Grade **FANCY INTENSE PINK**  
Clarity Grade **VS 1**

**ADDITIONAL GRADING INFORMATION**

Polish **VERY GOOD**  
Symmetry **EXCELLENT**  
Fluorescence **SLIGHT**  
Inscription(s) **IGI LG787666019**

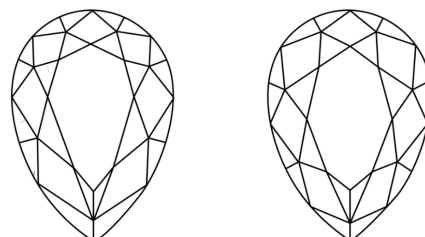
Comments: This Laboratory Grown Diamond was created by Chemical Vapor Deposition (CVD) growth process.  
Indications of post-growth treatment.

**PROPORTIONS**



Sample Image Used

**CLARITY CHARACTERISTICS**



**KEY TO SYMBOLS**

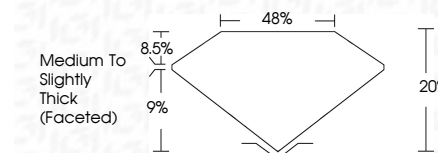
Red symbols indicate internal characteristics.  
Green symbols indicate external characteristics.

**COLOR**

D E F G H I J Faint Very Light Light

**CLARITY**

FL	IF	VS <sup>1-2</sup>	VS <sup>1-2</sup>	SI <sup>1-2</sup>	I <sup>1-3</sup>
Flawless	Internally Flawless	Very Very Slightly Included	Very Slightly Included	Slightly Included	Included



**ADDITIONAL GRADING INFORMATION**

Polish **VERY GOOD**  
Symmetry **EXCELLENT**  
Fluorescence **SLIGHT**  
Inscription(s) **IGI LG787666019**  
Comments: This Laboratory Grown Diamond was created by Chemical Vapor Deposition (CVD) growth process.  
Indications of post-growth treatment.



June 8, 2026  
IGI Report No LG787666019  
**PEAR ROSE CUT**  
14.49 X 8.74 X 1.75 MM  
1.95 CARAT  
FANCY INTENSE PINK  
VS 1  
20%  
48%  
Medium to Slightly Thick (Faceted)  
VERY GOOD  
EXCELLENT  
SLIGHT  
IGI LG787666019  
Comments: This Laboratory Grown Diamond was created by Chemical Vapor Deposition (CVD) growth process.  
Indications of post-growth treatment.