



ELECTRONIC COPY

LG787666018
Report verification at igi.org



June 8, 2026
IGI Report Number **LG787666018**
Description **LABORATORY GROWN DIAMOND**
Shape and Cutting Style **PEAR ROSE CUT**
Measurements **13.09 X 7.83 X 1.86 MM**
GRADING RESULTS
Carat Weight **1.74 CARAT**
Color Grade **FANCY INTENSE PINK**
Clarity Grade **VVS 2**

LABORATORY GROWN DIAMOND REPORT

June 8, 2026
IGI Report Number **LG787666018**
Description **LABORATORY GROWN DIAMOND**
Shape and Cutting Style **PEAR ROSE CUT**
Measurements **13.09 X 7.83 X 1.86 MM**

GRADING RESULTS

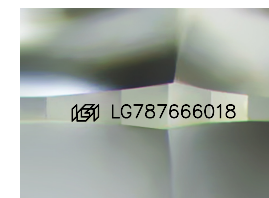
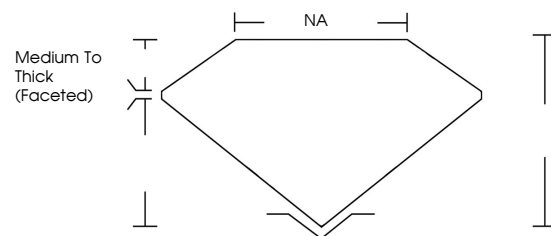
Carat Weight **1.74 CARAT**
Color Grade **FANCY INTENSE PINK**
Clarity Grade **VVS 2**

ADDITIONAL GRADING INFORMATION

Polish **EXCELLENT**
Symmetry **EXCELLENT**
Fluorescence **SLIGHT**
Inscription(s) **IGI LG787666018**

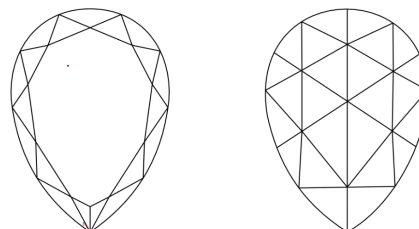
Comments: This Laboratory Grown Diamond was created by Chemical Vapor Deposition (CVD) growth process.
Indications of post-growth treatment.

PROPORTIONS



Sample Image Used

CLARITY CHARACTERISTICS



KEY TO SYMBOLS

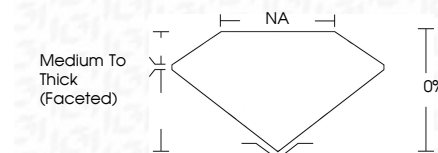
Red symbols indicate internal characteristics.
Green symbols indicate external characteristics.

COLOR

D E F G H I J Faint Very Light Light

CLARITY

FL	IF	VVS ¹⁻²	VS ¹⁻²	SI ¹⁻²	I ¹⁻³
Flawless	Internally Flawless	Very Very Slightly Included	Very Slightly Included	Slightly Included	Included



ADDITIONAL GRADING INFORMATION

Polish **EXCELLENT**
Symmetry **EXCELLENT**
Fluorescence **SLIGHT**
Inscription(s) **IGI LG787666018**
Comments: This Laboratory Grown Diamond was created by Chemical Vapor Deposition (CVD) growth process.
Indications of post-growth treatment.



June 8, 2026
IGI Report No LG787666018
PEAR ROSE CUT
1.74 CARAT
13.09 X 7.83 X 1.86 MM
Color Grade **FANCY INTENSE PINK**
Clarity Grade **VVS 2**
Depth **Medium To Thick (Faceted)**
Table **0%**
Girdle **NA**
Culet **Medium To Thick (Faceted)**
Polish **EXCELLENT**
Symmetry **EXCELLENT**
Fluorescence **SLIGHT**
Inscription(s) **IGI LG787666018**
Comments: This Laboratory Grown Diamond was created by Chemical Vapor Deposition (CVD) growth process.
Indications of post-growth treatment.