



**ELECTRONIC COPY**

LG787666015  
Report verification at igi.org



June 4, 2026

IGI Report Number **LG787666015**

Description **LABORATORY GROWN DIAMOND**

Shape and Cutting Style **CUSHION ROSE CUT**

Measurements **9.73 X 5.85 X 2.71 MM**

**GRADING RESULTS**

Carat Weight **1.41 CARAT**

Color Grade **FANCY VIVID GREEN**

Clarity Grade **VS 1**

June 4, 2026

IGI Report Number **LG787666015**

Description **LABORATORY GROWN DIAMOND**

Shape and Cutting Style **CUSHION ROSE CUT**

Measurements **9.73 X 5.85 X 2.71 MM**

**GRADING RESULTS**

Carat Weight **1.41 CARAT**

Color Grade **FANCY VIVID GREEN**

Clarity Grade **VS 1**

**ADDITIONAL GRADING INFORMATION**

Polish **EXCELLENT**

Symmetry **EXCELLENT**

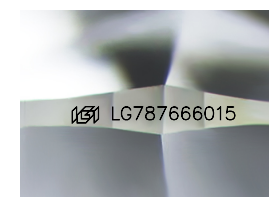
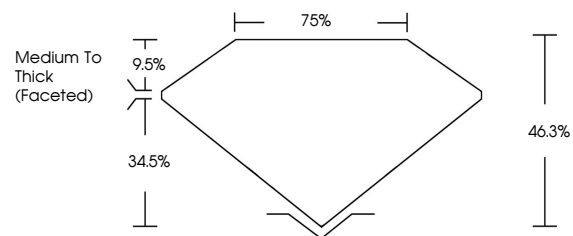
Fluorescence **VERY SLIGHT**

Inscription(s) **IGI LG787666015**

Comments: This Laboratory Grown Diamond was created by Chemical Vapor Deposition (CVD) growth process.

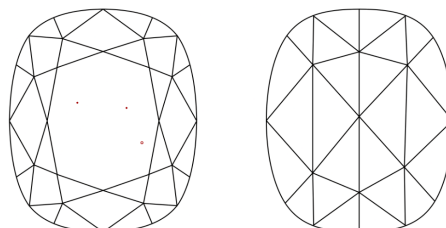
Indications of post-growth treatment.

**PROPORTIONS**



Sample Image Used

**CLARITY CHARACTERISTICS**



**KEY TO SYMBOLS**

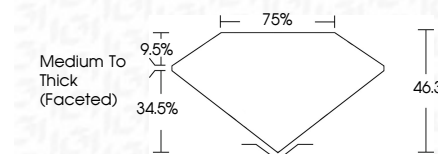
Red symbols indicate internal characteristics.  
Green symbols indicate external characteristics.

**COLOR**

D E F G H I J Faint Very Light Light

**CLARITY**

FL	IF	VS <sup>1-2</sup>	VS <sup>1-2</sup>	SI <sup>1-2</sup>	I <sup>1-3</sup>
Flawless	Internally Flawless	Very Very Slightly Included	Very Slightly Included	Slightly Included	Included



**ADDITIONAL GRADING INFORMATION**

Polish **EXCELLENT**

Symmetry **EXCELLENT**

Fluorescence **VERY SLIGHT**

Inscription(s) **IGI LG787666015**

Comments: This Laboratory Grown Diamond was created by Chemical Vapor Deposition (CVD) growth process.

Indications of post-growth treatment.



June 4, 2026  
IGI Report No LG787666015  
CUSHION ROSE CUT

1.41 CARAT  
FANCY VIVID GREEN  
VS 1  
Medium To Thick (Faceted)

9.73 X 5.85 X 2.71 MM  
Color Grade  
Clarity Grade  
Depth  
Table  
Girdle  
Culet  
Polish  
Symmetry  
Fluorescence  
Inscription(s)

EXCELLENT  
EXCELLENT  
VERY SLIGHT  
IGI LG787666015

Comments: This Laboratory Grown Diamond was created by Chemical Vapor Deposition (CVD) growth process. Indications of post-growth treatment.