



**ELECTRONIC COPY**

LG787666013  
Report verification at igi.org



June 4, 2026

IGI Report Number **LG787666013**

Description **LABORATORY GROWN DIAMOND**

Shape and Cutting Style **HEXAGONAL STEP CUT**

Measurements **13.86 X 7.89 X 2.17 MM**

**GRADING RESULTS**

Carat Weight **2.35 CARATS**

Color Grade **FANCY INTENSE PINK**

Clarity Grade **VS 1**

June 4, 2026  
IGI Report Number **LG787666013**  
Description **LABORATORY GROWN DIAMOND**  
Shape and Cutting Style **HEXAGONAL STEP CUT**  
Measurements **13.86 X 7.89 X 2.17 MM**

**GRADING RESULTS**

Carat Weight **2.35 CARATS**

Color Grade **FANCY INTENSE PINK**

Clarity Grade **VS 1**

**ADDITIONAL GRADING INFORMATION**

Polish **VERY GOOD**

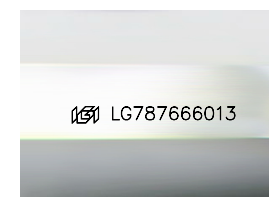
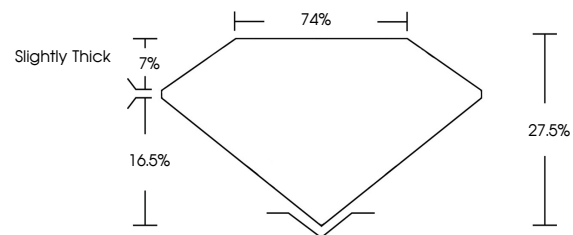
Symmetry **VERY GOOD**

Fluorescence **SLIGHT**

Inscription(s) **IGI LG787666013**

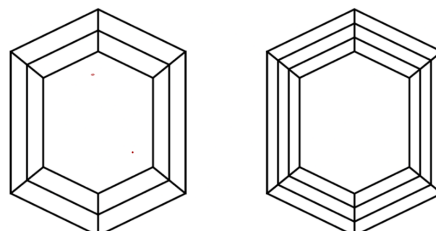
Comments: This Laboratory Grown Diamond was created by Chemical Vapor Deposition (CVD) growth process.  
Indications of post-growth treatment.

**PROPORTIONS**



Sample Image Used

**CLARITY CHARACTERISTICS**



**KEY TO SYMBOLS**

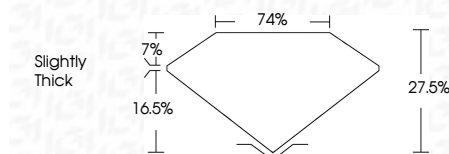
Red symbols indicate internal characteristics.  
Green symbols indicate external characteristics.

**COLOR**

D E F G H I J Faint Very Light Light

**CLARITY**

FL	IF	VS <sup>1-2</sup>	VS <sup>1-2</sup>	SI <sup>1-2</sup>	I <sup>1-3</sup>
Flawless	Internally Flawless	Very Very Slightly Included	Very Slightly Included	Slightly Included	Included



**ADDITIONAL GRADING INFORMATION**

Polish **VERY GOOD**

Symmetry **VERY GOOD**

Fluorescence **SLIGHT**

Inscription(s) **IGI LG787666013**

Comments: This Laboratory Grown Diamond was created by Chemical Vapor Deposition (CVD) growth process.  
Indications of post-growth treatment.



June 4, 2026  
IGI Report No **LG787666013**  
**HEXAGONAL STEP CUT**  
**2.35 CARATS**  
Carat Weight  
Color Grade **FANCY INTENSE PINK**  
Clarity Grade **VS 1**  
Depth **27.5%**  
Table **74%**  
Girdle **Slightly Thick**  
Culet  
Polish **VERY GOOD**  
Symmetry **VERY GOOD**  
Fluorescence **SLIGHT**  
Inscription(s) **IGI LG787666013**  
Comments: This Laboratory Grown Diamond was created by Chemical Vapor Deposition (CVD) growth process.  
Indications of post-growth treatment.