



**ELECTRONIC COPY**

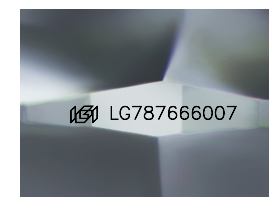
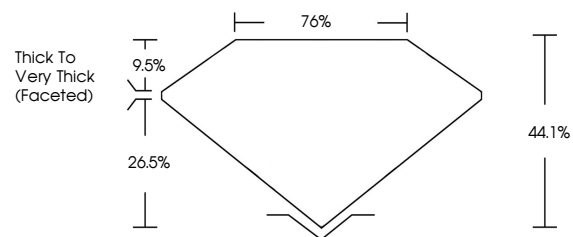
LG787666007  
Report verification at igi.org



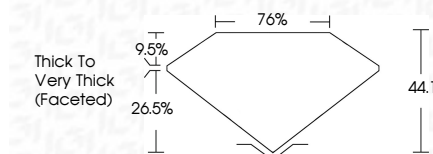
June 4, 2026  
IGI Report Number **LG787666007**  
Description **LABORATORY GROWN DIAMOND**  
Shape and Cutting Style **CUSHION ROSE CUT**  
Measurements **8.75 X 6.14 X 2.71 MM**  
**GRADING RESULTS**  
Carat Weight **1.54 CARAT**  
Color Grade **FANCY INTENSE PINK**  
Clarity Grade **VS 1**

June 4, 2026  
IGI Report Number **LG787666007**  
Description **LABORATORY GROWN DIAMOND**  
Shape and Cutting Style **CUSHION ROSE CUT**  
Measurements **8.75 X 6.14 X 2.71 MM**  
**GRADING RESULTS**  
Carat Weight **1.54 CARAT**  
Color Grade **FANCY INTENSE PINK**  
Clarity Grade **VS 1**

**PROPORTIONS**



Sample Image Used



**ADDITIONAL GRADING INFORMATION**

Polish **EXCELLENT**  
Symmetry **EXCELLENT**  
Fluorescence **SLIGHT**  
Inscription(s) **IGI LG787666007**

Comments: This Laboratory Grown Diamond was created by Chemical Vapor Deposition (CVD) growth process. Indications of post-growth treatment.

**ADDITIONAL GRADING INFORMATION**

Polish **EXCELLENT**  
Symmetry **EXCELLENT**  
Fluorescence **SLIGHT**  
Inscription(s) **IGI LG787666007**

Comments: This Laboratory Grown Diamond was created by Chemical Vapor Deposition (CVD) growth process. Indications of post-growth treatment.

**COLOR**

D E F G H I J Faint Very Light Light

**CLARITY**

FL	IF	VS <sup>1-2</sup>	VS <sup>1-2</sup>	SI <sup>1-2</sup>	I <sup>1-3</sup>
Flawless	Internally Flawless	Very Very Slightly Included	Very Slightly Included	Slightly Included	Included



**IGI**



June 4, 2026  
IGI Report No **LG787666007**  
**CUSHION ROSE CUT**  
Carat Weight **1.54 CARAT**  
Color Grade **FANCY INTENSE PINK**  
Clarity Grade **VS 1**  
Depth **44.1%**  
Table **9.5%**  
Girdle **Thick to Very Thick (Faceted)**  
Culet **EXCELLENT**  
Polish **EXCELLENT**  
Symmetry **EXCELLENT**  
Fluorescence **SLIGHT**  
Inscription(s) **IGI LG787666007**  
Comments: This Laboratory Grown Diamond was created by Chemical Vapor Deposition (CVD) growth process. Indications of post-growth treatment.