



ELECTRONIC COPY

LG787666002
Report verification at igi.org



June 5, 2026
IGI Report Number **LG787666002**
Description **LABORATORY GROWN DIAMOND**
Shape and Cutting Style **ROUND ROSE CUT**
Measurements **8.06 - 8.09 X 1.71 MM**
GRADING RESULTS
Carat Weight **1.09 CARAT**
Color Grade **FANCY INTENSE PINK**
Clarity Grade **VVS 2**

June 5, 2026
IGI Report Number **LG787666002**
Description **LABORATORY GROWN DIAMOND**
Shape and Cutting Style **ROUND ROSE CUT**
Measurements **8.06 - 8.09 X 1.71 MM**

GRADING RESULTS

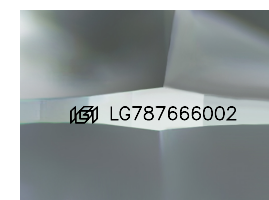
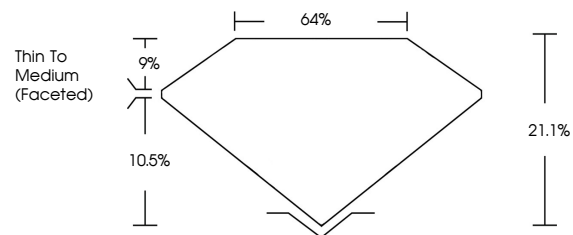
Carat Weight **1.09 CARAT**
Color Grade **FANCY INTENSE PINK**
Clarity Grade **VVS 2**

ADDITIONAL GRADING INFORMATION

Polish **VERY GOOD**
Symmetry **EXCELLENT**
Fluorescence **SLIGHT**
Inscription(s) **IGI LG787666002**

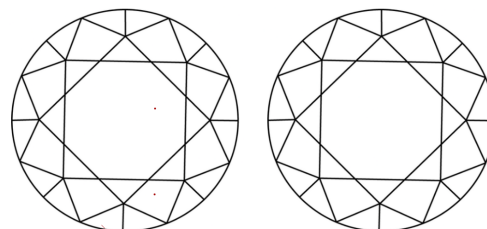
Comments: This Laboratory Grown Diamond was created by Chemical Vapor Deposition (CVD) growth process.
Indications of post-growth treatment.

PROPORTIONS



Sample Image Used

CLARITY CHARACTERISTICS



KEY TO SYMBOLS

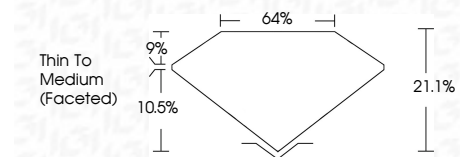
Red symbols indicate internal characteristics.
Green symbols indicate external characteristics.

COLOR

D E F G H I J Faint Very Light Light

CLARITY

FL	IF	VVS ¹⁻²	VS ¹⁻²	SI ¹⁻²	I ¹⁻³
Flawless	Internally Flawless	Very Very Slightly Included	Very Slightly Included	Slightly Included	Included



ADDITIONAL GRADING INFORMATION

Polish **VERY GOOD**
Symmetry **EXCELLENT**
Fluorescence **SLIGHT**
Inscription(s) **IGI LG787666002**
Comments: This Laboratory Grown Diamond was created by Chemical Vapor Deposition (CVD) growth process.
Indications of post-growth treatment.



June 5, 2026
IGI Report No LG787666002
ROUND ROSE CUT
8.06 - 8.09 X 1.71 MM
1.09 CARAT
FANCY INTENSE PINK
VVS 2
21.1%
64%
Thin To Medium (Faceted)
VERY GOOD
EXCELLENT
SLIGHT
IGI LG787666002

Comments: This Laboratory Grown Diamond was created by Chemical Vapor Deposition (CVD) growth process.
Indications of post-growth treatment.