



**ELECTRONIC COPY**

LG787666001  
Report verification at igi.org



June 5, 2026

IGI Report Number **LG787666001**

Description **LABORATORY GROWN DIAMOND**

Shape and Cutting Style **ROUND ROSE CUT**

Measurements **8.09 - 8.09 X 1.73 MM**

**GRADING RESULTS**

Carat Weight **1.10 CARAT**

Color Grade **FANCY INTENSE PINK**

Clarity Grade **VVS 2**

June 5, 2026

IGI Report Number **LG787666001**

Description **LABORATORY GROWN DIAMOND**

Shape and Cutting Style **ROUND ROSE CUT**

Measurements **8.09 - 8.09 X 1.73 MM**

**GRADING RESULTS**

Carat Weight **1.10 CARAT**

Color Grade **FANCY INTENSE PINK**

Clarity Grade **VVS 2**

**ADDITIONAL GRADING INFORMATION**

Polish **EXCELLENT**

Symmetry **EXCELLENT**

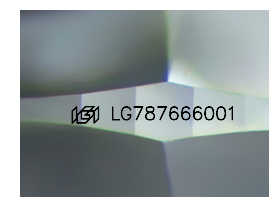
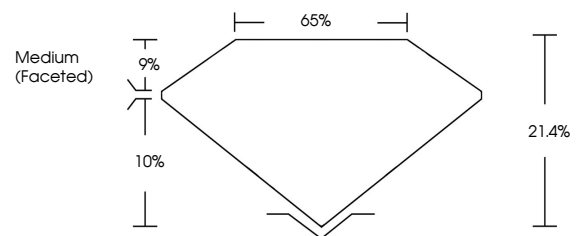
Fluorescence **SLIGHT**

Inscription(s) **IGI LG787666001**

Comments: This Laboratory Grown Diamond was created by Chemical Vapor Deposition (CVD) growth process.

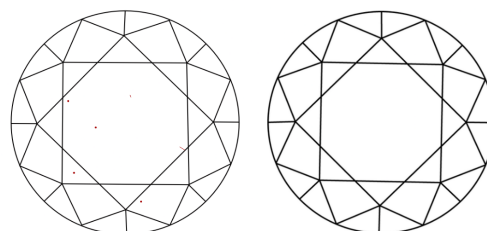
Indications of post-growth treatment.

**PROPORTIONS**



Sample Image Used

**CLARITY CHARACTERISTICS**



**KEY TO SYMBOLS**

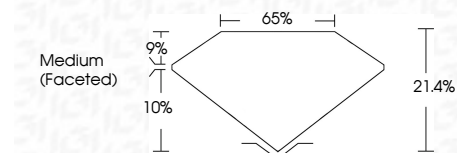
Red symbols indicate internal characteristics.  
Green symbols indicate external characteristics.

**COLOR**

D E F G H I J Faint Very Light Light

**CLARITY**

FL	IF	VVS <sup>1-2</sup>	VS <sup>1-2</sup>	SI <sup>1-2</sup>	I <sup>1-3</sup>
Flawless	Internally Flawless	Very Very Slightly Included	Very Slightly Included	Slightly Included	Included



**ADDITIONAL GRADING INFORMATION**

Polish **EXCELLENT**

Symmetry **EXCELLENT**

Fluorescence **SLIGHT**

Inscription(s) **IGI LG787666001**

Comments: This Laboratory Grown Diamond was created by Chemical Vapor Deposition (CVD) growth process. Indications of post-growth treatment.



June 5, 2026  
IGI Report No LG787666001  
ROUND ROSE CUT

1.10 CARAT  
Carat Weight  
FANCY INTENSE PINK  
Color Grade  
VVS 2  
Clarity Grade  
21.4%  
65%  
Medium (Faceted)

EXCELLENT  
EXCELLENT  
SLIGHT  
IGI LG787666001

Comments: This Laboratory Grown Diamond was created by Chemical Vapor Deposition (CVD) growth process. Indications of post-growth treatment.