



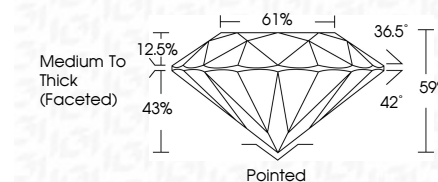
ELECTRONIC COPY

LG787665820
Report verification at igi.org



April 7, 2026
IGI Report Number **LG787665820**
Description **LABORATORY GROWN DIAMOND**
Shape and Cutting Style **ROUND MIXED CUT**
Measurements **12.68 - 12.68 X 7.48 MM**

GRADING RESULTS
Carat Weight **8.10 CARATS**
Color Grade **F**
Clarity Grade **VVS 2**



ADDITIONAL GRADING INFORMATION
Polish **EXCELLENT**
Symmetry **EXCELLENT**
Fluorescence **NONE**
Inscription(s) **IGI LG787665820**
Comments: This Laboratory Grown Diamond was created by Chemical Vapor Deposition (CVD) growth process. Type IIa



April 7, 2026
IGI Report No LG787665820
ROUND MIXED CUT
12.68 - 12.68 X 7.48 MM
8.10 CARATS
Color Grade **F**
Clarity Grade **VVS 2**
Depth **59%**
Table **61%**
Girdle **Medium To Thick (Faceted)**
Culet **Pointed**
Polish **EXCELLENT**
Symmetry **EXCELLENT**
Fluorescence **NONE**
Inscription(s) **IGI LG787665820**
Comments: This Laboratory Grown Diamond was created by Chemical Vapor Deposition (CVD) growth process. Type IIa

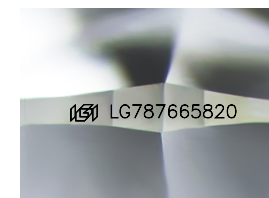
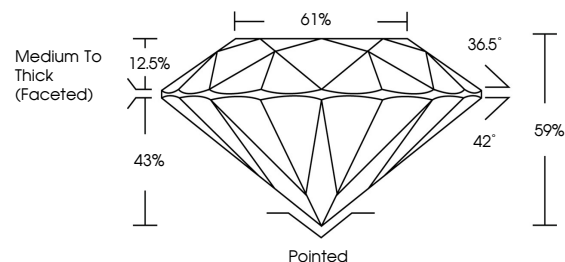
April 7, 2026
IGI Report Number **LG787665820**
Description **LABORATORY GROWN DIAMOND**
Shape and Cutting Style **ROUND MIXED CUT**
Measurements **12.68 - 12.68 X 7.48 MM**

GRADING RESULTS
Carat Weight **8.10 CARATS**
Color Grade **F**
Clarity Grade **VVS 2**

ADDITIONAL GRADING INFORMATION
Polish **EXCELLENT**
Symmetry **EXCELLENT**
Fluorescence **NONE**
Inscription(s) **IGI LG787665820**

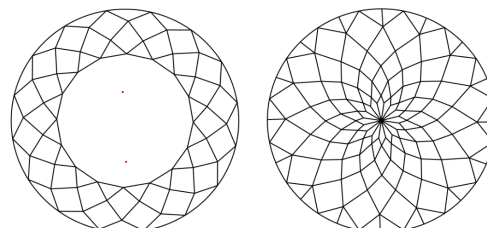
Comments: This Laboratory Grown Diamond was created by Chemical Vapor Deposition (CVD) growth process. Type IIa

PROPORTIONS



Sample Image Used

CLARITY CHARACTERISTICS



KEY TO SYMBOLS

Red symbols indicate internal characteristics.
Green symbols indicate external characteristics.

COLOR

D E F G H I J Faint Very Light Light

CLARITY

FL	IF	VVS ¹⁻²	VS ¹⁻²	SI ¹⁻²	I ¹⁻³
Flawless	Internally Flawless	Very Very Slightly Included	Very Slightly Included	Slightly Included	Included

