



Light Performance Grade: Exceptional



March 31, 2026 IGI Report Number LG787659252 Description LABORATORY GROWN DIAMOND Shape and Cutting Style ROUND BRILLIANT Measurements 7.45 - 7.50 X 4.57 MM GRADING RESULTS Carat Weight 1.57 CARAT Color Grade F Clarity Grade VVS 2 Cut Grade IDEAL

ELECTRONIC COPY LABORATORY GROWN DIAMOND REPORT

March 31, 2026 IGI Report Number LG787659252 Description LABORATORY GROWN DIAMOND Shape and Cutting Style ROUND BRILLIANT Measurements 7.45 - 7.50 x 4.57 mm

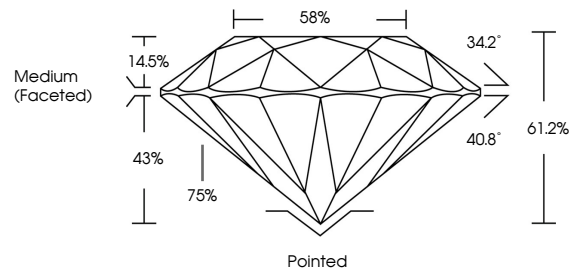
GRADING RESULTS

Carat Weight 1.57 CARAT Color Grade F Clarity Grade VVS 2 Cut Grade IDEAL

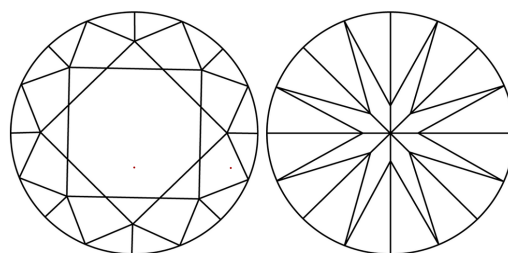
ADDITIONAL GRADING INFORMATION

Polish EXCELLENT Symmetry EXCELLENT Fluorescence NONE Inscription(s) IGI LG787659252 Comments: This Laboratory Grown Diamond was created by Chemical Vapor Deposition (CVD) growth process. Type IIa

PROPORTIONS

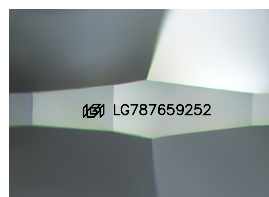


CLARITY CHARACTERISTICS

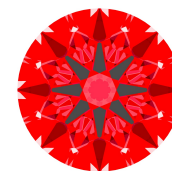


KEY TO SYMBOLS

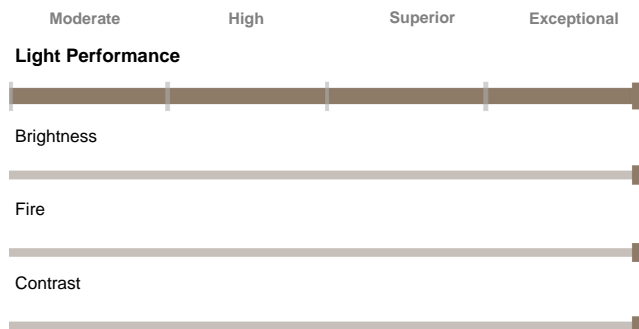
Red symbols indicate internal characteristics. Green symbols indicate external characteristics.



Sample Image Used



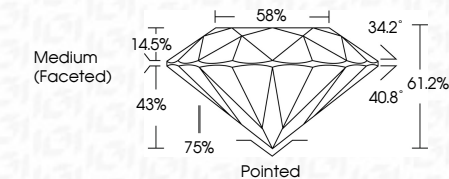
Structured Light Environment Representation



COLOR



CLARITY



ADDITIONAL GRADING INFORMATION

Polish EXCELLENT Symmetry EXCELLENT Fluorescence NONE Inscription(s) IGI LG787659252 Comments: This Laboratory Grown Diamond was created by Chemical Vapor Deposition (CVD) growth process. Type IIa



IGI

Summary table of report details: March 31, 2026, IGI Report No LG787659252, ROUND BRILLIANT, 7.45 - 7.50 X 4.57 MM, 1.57 CARAT, Color Grade F, Clarity Grade VVS 2, Depth 61.2%, Table 58%, Grade Medium (Faceted), Polish EXCELLENT, Symmetry EXCELLENT, Fluorescence NONE, Inscription(s) IGI LG787659252.

