



**ELECTRONIC COPY**

LG787658454  
Report verification at igi.org



April 3, 2026

IGI Report Number **LG787658454**

Description **LABORATORY GROWN DIAMOND**

Shape and Cutting Style **ROUND BRILLIANT**

Measurements **7.22 - 7.25 X 4.56 MM**

**GRADING RESULTS**

Carat Weight **1.49 CARAT**

Color Grade **E**

Clarity Grade **VVS 2**

Cut Grade **EXCELLENT**

April 3, 2026

IGI Report Number **LG787658454**

Description **LABORATORY GROWN DIAMOND**

Shape and Cutting Style **ROUND BRILLIANT**

Measurements **7.22 - 7.25 X 4.56 MM**

**GRADING RESULTS**

Carat Weight **1.49 CARAT**

Color Grade **E**

Clarity Grade **VVS 2**

Cut Grade **EXCELLENT**

**ADDITIONAL GRADING INFORMATION**

Polish **EXCELLENT**

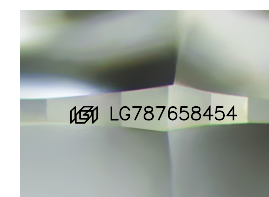
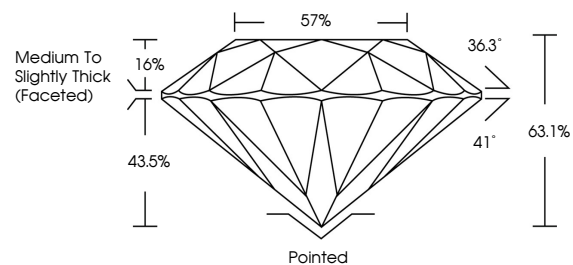
Symmetry **EXCELLENT**

Fluorescence **NONE**

Inscription(s) **LG787658454**

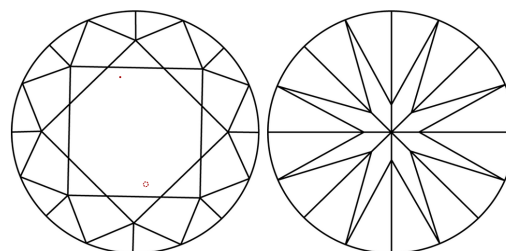
Comments: This Laboratory Grown Diamond was created by Chemical Vapor Deposition (CVD) growth process.  
Type IIa

**PROPORTIONS**



Sample Image Used

**CLARITY CHARACTERISTICS**



**KEY TO SYMBOLS**

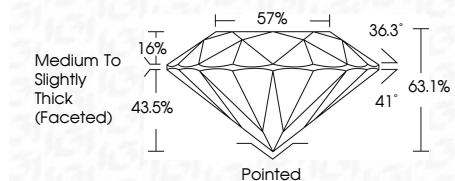
Red symbols indicate internal characteristics.  
Green symbols indicate external characteristics.

**COLOR**

D E F G H I J Faint Very Light Light

**CLARITY**

| FL       | IF                  | VVS <sup>1-2</sup>          | VS <sup>1-2</sup>      | SI <sup>1-2</sup> | I <sup>1-3</sup> |
|----------|---------------------|-----------------------------|------------------------|-------------------|------------------|
| Flawless | Internally Flawless | Very Very Slightly Included | Very Slightly Included | Slightly Included | Included         |



**ADDITIONAL GRADING INFORMATION**

Polish **EXCELLENT**

Symmetry **EXCELLENT**

Fluorescence **NONE**

Inscription(s) **LG787658454**

Comments: This Laboratory Grown Diamond was created by Chemical Vapor Deposition (CVD) growth process.  
Type IIa



|                 |                           |             |               |           |           |       |        |                                    |         |           |           |              |                |
|-----------------|---------------------------|-------------|---------------|-----------|-----------|-------|--------|------------------------------------|---------|-----------|-----------|--------------|----------------|
| April 3, 2026   | IGI Report No LG787658454 | 1.49 CARAT  | E             | VVS 2     | EXCELLENT | 63.1% | 57%    | Medium To Slightly Thick (Faceted) | Pointed | EXCELLENT | EXCELLENT | NONE         | LG787658454    |
| ROUND BRILLIANT | 7.22 - 7.25 X 4.56 MM     | Color Grade | Clarity Grade | Cut Grade | Depth     | Table | Girdle |                                    |         | Polish    | Symmetry  | Fluorescence | Inscription(s) |
|                 |                           |             |               |           |           |       |        |                                    |         |           |           |              |                |

Comments: This Laboratory Grown Diamond was created by Chemical Vapor Deposition (CVD) growth process.  
Type IIa