



ELECTRONIC COPY

LG787657958
Report verification at igi.org



April 6, 2026

IGI Report Number **LG787657958**

Description **LABORATORY GROWN DIAMOND**

Shape and Cutting Style **ROUND BRILLIANT**

Measurements **10.56 - 10.61 X 6.57 MM**

GRADING RESULTS

Carat Weight **4.55 CARATS**

Color Grade **F**

Clarity Grade **VS 1**

Cut Grade **IDEAL**

April 6, 2026

IGI Report Number **LG787657958**

Description **LABORATORY GROWN DIAMOND**

Shape and Cutting Style **ROUND BRILLIANT**

Measurements **10.56 - 10.61 X 6.57 MM**

GRADING RESULTS

Carat Weight **4.55 CARATS**

Color Grade **F**

Clarity Grade **VS 1**

Cut Grade **IDEAL**

ADDITIONAL GRADING INFORMATION

Polish **EXCELLENT**

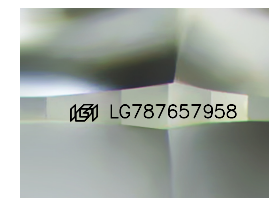
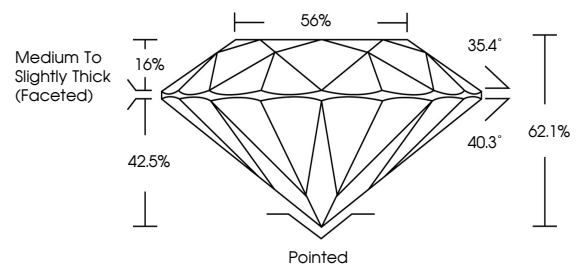
Symmetry **EXCELLENT**

Fluorescence **NONE**

Inscription(s) **IGI LG787657958**

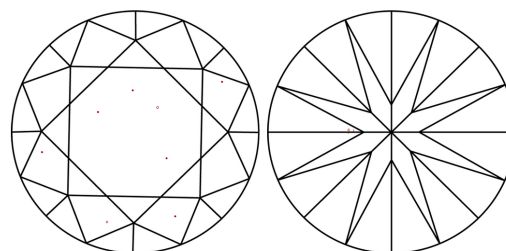
Comments: This Laboratory Grown Diamond was created by Chemical Vapor Deposition (CVD) growth process. Type IIa

PROPORTIONS



Sample Image Used

CLARITY CHARACTERISTICS



KEY TO SYMBOLS

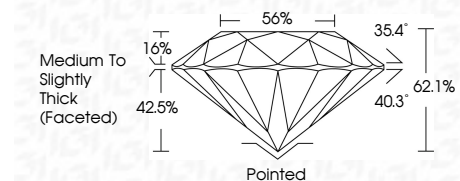
Red symbols indicate internal characteristics.
Green symbols indicate external characteristics.

COLOR

D E F G H I J Faint Very Light Light

CLARITY

FL	IF	VS ¹⁻²	VS ¹⁻²	SI ¹⁻²	I ¹⁻³
Flawless	Internally Flawless	Very Very Slightly Included	Very Slightly Included	Slightly Included	Included



ADDITIONAL GRADING INFORMATION

Polish **EXCELLENT**

Symmetry **EXCELLENT**

Fluorescence **NONE**

Inscription(s) **IGI LG787657958**

Comments: This Laboratory Grown Diamond was created by Chemical Vapor Deposition (CVD) growth process. Type IIa



IGI



April 6, 2026
IGI Report No LG787657958
ROUND BRILLIANT

4.55 CARATS
F

Carat Weight
Color Grade
Clarity Grade
Depth
Table
Girdle

10.56 - 10.61 X 6.57 MM

VS 1
IDEAL
62.1%
56%

Medium To Slightly Thick (Faceted)

Pointed
EXCELLENT
EXCELLENT
NONE

Culet
Polish
Symmetry
Fluorescence
Inscription(s)

IGI LG787657958

Comments: This Laboratory Grown Diamond was created by Chemical Vapor Deposition (CVD) growth process. Type IIa