



April 6, 2026

**IGI Report Number** LG787657811  
**ROUND BRILLIANT**  
**LABORATORY GROWN DIAMOND**  
**4.79 - 4.84 X 2.92 MM**

**0.41 CARAT**  
**D**  
**FLAWLESS**  
**IDEAL**  
**EXCELLENT**  
**EXCELLENT**  
**NONE**  
**Inscription(s)** IGI LG787657811

Comments: As Grown - No indication of post-growth treatment. This Laboratory Grown Diamond was created by High Pressure High Temperature (HPHT) growth process. Type II

**LABORATORY GROWN DIAMOND REPORT**

April 6, 2026  
IGI Report Number **LG787657811**  
Description **LABORATORY GROWN DIAMOND**  
Shape and Cutting Style **ROUND BRILLIANT**  
Measurements **4.79 - 4.84 X 2.92 MM**

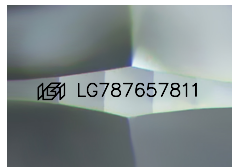
**GRADING RESULTS**

Carat Weight **0.41 CARAT**  
Color Grade **D**  
Clarity Grade **FLAWLESS**  
Cut Grade **IDEAL**

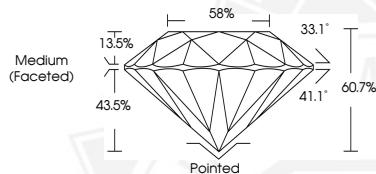
**ADDITIONAL GRADING INFORMATION**

Polish **EXCELLENT**  
Symmetry **EXCELLENT**  
Fluorescence **NONE**  
Inscription(s) **IGI LG787657811**

Comments: As Grown - No indication of post-growth treatment. This Laboratory Grown Diamond was created by High Pressure High Temperature (HPHT) growth process. Type II



Sample Image Used



April 6, 2026

**IGI Report Number** LG787657811  
**ROUND BRILLIANT**  
**LABORATORY GROWN DIAMOND**  
**4.79 - 4.84 X 2.92 MM**

**0.41 CARAT**  
**D**  
**FLAWLESS**  
**IDEAL**  
**EXCELLENT**  
**EXCELLENT**  
**NONE**  
**Inscription(s)** IGI LG787657811

Comments: As Grown - No indication of post-growth treatment. This Laboratory Grown Diamond was created by High Pressure High Temperature (HPHT) growth process. Type II



THIS DOCUMENT WAS PRODUCED WITH THE FOLLOWING SECURITY MEASURES: SPECIAL DOCUMENT PAPER, INK SCREENS, WATERMARK, BACKGROUND DESIGNS, HOLOGRAM AND OTHER SECURITY FEATURES NOT LISTED AND DO EXCEED DOCUMENT SECURITY INDUSTRY GUIDELINES.