



ELECTRONIC COPY

LG787653257
Report verification at igi.org



April 4, 2026
IGI Report Number **LG787653257**
Description **LABORATORY GROWN DIAMOND**
Shape and Cutting Style **SQUARE EMERALD CUT**
Measurements **7.03 X 6.91 X 4.55 MM**

GRADING RESULTS

Carat Weight **2.10 CARATS**
Color Grade **FANCY PINK**
Clarity Grade **VS 1**

April 4, 2026
IGI Report Number **LG787653257**
Description **LABORATORY GROWN DIAMOND**
Shape and Cutting Style **SQUARE EMERALD CUT**
Measurements **7.03 X 6.91 X 4.55 MM**

GRADING RESULTS

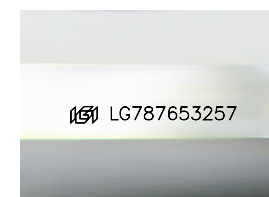
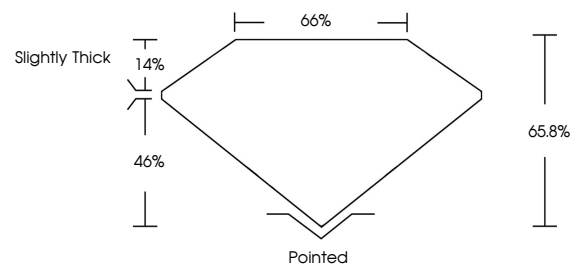
Carat Weight **2.10 CARATS**
Color Grade **FANCY PINK**
Clarity Grade **VS 1**

ADDITIONAL GRADING INFORMATION

Polish **EXCELLENT**
Symmetry **EXCELLENT**
Fluorescence **SLIGHT**
Inscription(s) **LG787653257**

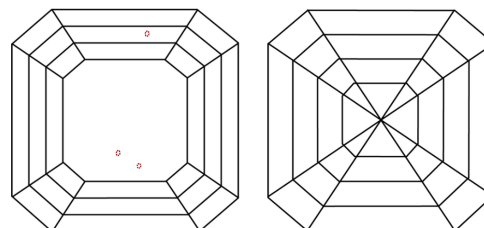
Comments: This Laboratory Grown Diamond was created by Chemical Vapor Deposition (CVD) growth process.
Indications of post-growth treatment.

PROPORTIONS



Sample Image Used

CLARITY CHARACTERISTICS



KEY TO SYMBOLS

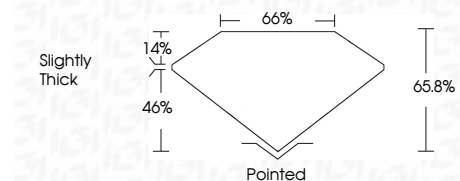
Red symbols indicate internal characteristics.
Green symbols indicate external characteristics.

COLOR

D E F G H I J Faint Very Light Light

CLARITY

FL	IF	VS ¹⁻²	VS ¹⁻²	SI ¹⁻²	I ¹⁻³
Flawless	Internally Flawless	Very Very Slightly Included	Very Slightly Included	Slightly Included	Included



ADDITIONAL GRADING INFORMATION

Polish **EXCELLENT**
Symmetry **EXCELLENT**
Fluorescence **SLIGHT**
Inscription(s) **LG787653257**
Comments: This Laboratory Grown Diamond was created by Chemical Vapor Deposition (CVD) growth process.
Indications of post-growth treatment.



April 4, 2026
IGI Report No **LG787653257**
SQUARE EMERALD CUT
2.10 CARATS
FANCY PINK
Carat Weight **2.10 CARATS**
Color Grade **FANCY PINK**
Clarity Grade **VS 1**
Depth **65.8%**
Table **66%**
Girdle **Slightly Thick**
Culet **Pointed**
Polish **EXCELLENT**
Symmetry **EXCELLENT**
Fluorescence **SLIGHT**
Inscription(s) **LG787653257**
Comments: This Laboratory Grown Diamond was created by Chemical Vapor Deposition (CVD) growth process.
Indications of post-growth treatment.