



**ELECTRONIC COPY**

LG787651493  
Report verification at igi.org



June 2, 2026

IGI Report Number **LG787651493**

Description **LABORATORY GROWN DIAMOND**

Shape and Cutting Style **CUT CORNERED  
RECTANGULAR MODIFIED  
BRILLIANT**

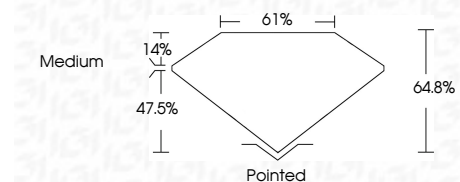
Measurements **9.24 X 6.48 X 4.20 MM**

**GRADING RESULTS**

Carat Weight **2.09 CARATS**

Color Grade **D**

Clarity Grade **VVS 1**



**ADDITIONAL GRADING INFORMATION**

Polish **EXCELLENT**

Symmetry **EXCELLENT**

Fluorescence **NONE**

Inscription(s) **IGI LG787651493**

Comments: As Grown - No indication of post-growth treatment.

This Laboratory Grown Diamond was created by High Pressure High Temperature (HPHT) growth process. Type II



|              |                           |                                       |                       |             |       |        |       |        |          |              |                |  |  |                 |
|--------------|---------------------------|---------------------------------------|-----------------------|-------------|-------|--------|-------|--------|----------|--------------|----------------|--|--|-----------------|
| June 2, 2026 | IGI Report No LG787651493 | CUT CORNERED RECT. MODIFIED BRILLIANT | 9.24 X 6.48 X 4.20 MM | 2.09 CARATS | D     | VVS 1  | 64.8% | 61%    | Medium   | Pointed      | EXCELLENT      | EXCELLENT  | NONE   | IGI LG787651493 |
| IGI          | Carat Weight              | Color Grade                           | Clarity Grade         | Depth       | Table | Graile | Culet | Polish | Symmetry | Fluorescence | Inscription(s) | Comments: As Grown - No indication of post-growth treatment. | This Laboratory Grown Diamond was created by High Pressure High Temperature (HPHT) growth process. Type II |                 |

**LABORATORY GROWN DIAMOND REPORT**

June 2, 2026

IGI Report Number **LG787651493**

Description **LABORATORY GROWN DIAMOND**

Shape and Cutting Style **CUT CORNERED RECTANGULAR  
MODIFIED BRILLIANT**

Measurements **9.24 X 6.48 X 4.20 MM**

**GRADING RESULTS**

Carat Weight **2.09 CARATS**

Color Grade **D**

Clarity Grade **VVS 1**

**ADDITIONAL GRADING INFORMATION**

Polish **EXCELLENT**

Symmetry **EXCELLENT**

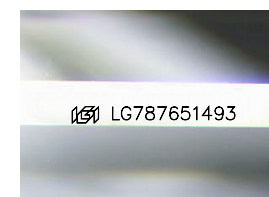
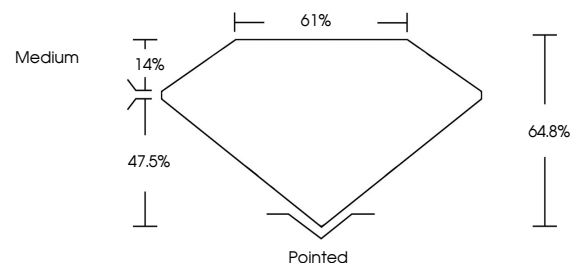
Fluorescence **NONE**

Inscription(s) **IGI LG787651493**

Comments: As Grown - No indication of post-growth treatment.

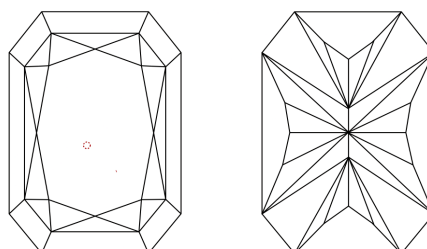
This Laboratory Grown Diamond was created by High Pressure High Temperature (HPHT) growth process. Type II

**PROPORTIONS**



Sample Image Used

**CLARITY CHARACTERISTICS**



**KEY TO SYMBOLS**

Red symbols indicate internal characteristics.  
Green symbols indicate external characteristics.

**COLOR**

D E F G H I J Faint Very Light Light

**CLARITY**

|          |                     |                             |                        |                   |                  |
|----------|---------------------|-----------------------------|------------------------|-------------------|------------------|
| FL       | IF                  | VVS <sup>1-2</sup>          | VS <sup>1-2</sup>      | SI <sup>1-2</sup> | I <sup>1-3</sup> |
| Flawless | Internally Flawless | Very Very Slightly Included | Very Slightly Included | Slightly Included | Included         |

