



LABORATORY GROWN DIAMOND REPORT

April 2, 2026
 IGI Report Number **LG787650898**
 Description **LABORATORY GROWN DIAMOND**
 Shape and Cutting Style **PEAR MODIFIED BRILLIANT**
 Measurements **7.57 X 4.83 X 3.10 MM**

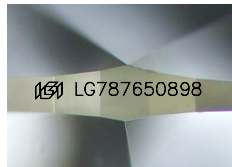
GRADING RESULTS

Carat Weight **0.81 CARAT**
 Color Grade **FANCY INTENSE YELLOW**
 Clarity Grade **VS 2**

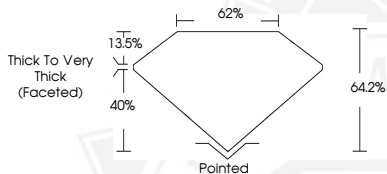
ADDITIONAL GRADING INFORMATION

Polish **VERY GOOD**
 Symmetry **VERY GOOD**
 Fluorescence **NONE**
 Inscription(s) **IGI LG787650898**

Comments: As Grown - No indication of post-growth treatment. This Laboratory Grown Diamond was created by High Pressure High Temperature (HPHT) growth process.



Sample Image Used



April 2, 2026
 IGI Report Number **LG787650898**
PEAR MODIFIED BRILLIANT
LABORATORY GROWN DIAMOND
7.57 X 4.83 X 3.10 MM
 Carat Weight **0.81 CARAT**
 Color Grade **FANCY INTENSE YELLOW**
 Clarity Grade **VS 2**
 Polish **VERY GOOD**
 Symmetry **VERY GOOD**
 Fluorescence **NONE**
 Inscription(s) **IGI LG787650898**

Comments: As Grown - No indication of post-growth treatment. This Laboratory Grown Diamond was created by High Pressure High Temperature (HPHT) growth process.



April 2, 2026
 IGI Report Number **LG787650898**
PEAR MODIFIED BRILLIANT
LABORATORY GROWN DIAMOND
7.57 X 4.83 X 3.10 MM
 Carat Weight **0.81 CARAT**
 Color Grade **FANCY INTENSE YELLOW**
 Clarity Grade **VS 2**
 Polish **VERY GOOD**
 Symmetry **VERY GOOD**
 Fluorescence **NONE**
 Inscription(s) **IGI LG787650898**

Comments: As Grown - No indication of post-growth treatment. This Laboratory Grown Diamond was created by High Pressure High Temperature (HPHT) growth process.



THIS DOCUMENT WAS PRODUCED WITH THE FOLLOWING SECURITY MEASURES: SPECIAL DOCUMENT PAPER, INK SCREENS, WATERMARK, BACKGROUND DESIGNS, HOLOGRAM AND OTHER SECURITY FEATURES NOT LISTED AND DO EXCEED DOCUMENT SECURITY INDUSTRY GUIDELINES.