



ELECTRONIC COPY

LABORATORY GROWN DIAMOND REPORT

March 31, 2026
IGI Report Number **LG787646690**

Description **LABORATORY GROWN DIAMOND**

Shape and Cutting Style **CUT CORNERED RECTANGULAR
MODIFIED BRILLIANT**

Measurements **7.42 X 5.29 X 3.41 MM**

GRADING RESULTS

Carat Weight **1.21 CARAT**

Color Grade **E**

Clarity Grade **VVS 2**

ADDITIONAL GRADING INFORMATION

Polish **EXCELLENT**

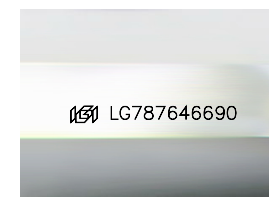
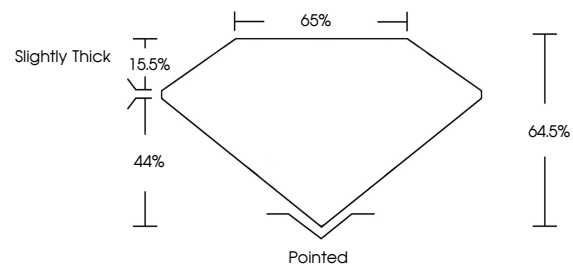
Symmetry **EXCELLENT**

Fluorescence **NONE**

Inscription(s) **IGI LG787646690**

Comments: This Laboratory Grown Diamond was created by Chemical Vapor Deposition (CVD) growth process.
Type IIa

PROPORTIONS



Sample Image Used

COLOR

D E F G H I J Faint Very Light Light

CLARITY

FL	IF	VVS ¹⁻²	VS ¹⁻²	SI ¹⁻²	I ¹⁻³
Flawless	Internally Flawless	Very Very Slightly Included	Very Slightly Included	Slightly Included	Included



March 31, 2026

IGI Report Number **LG787646690**

Description **LABORATORY GROWN DIAMOND**

Shape and Cutting Style **CUT CORNERED
RECTANGULAR MODIFIED
BRILLIANT**

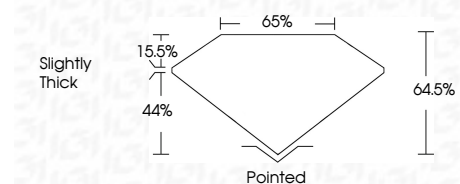
Measurements **7.42 X 5.29 X 3.41 MM**

GRADING RESULTS

Carat Weight **1.21 CARAT**

Color Grade **E**

Clarity Grade **VVS 2**



ADDITIONAL GRADING INFORMATION

Polish **EXCELLENT**

Symmetry **EXCELLENT**

Fluorescence **NONE**

Inscription(s) **IGI LG787646690**

Comments: This Laboratory Grown Diamond was created by Chemical Vapor Deposition (CVD) growth process.
Type IIa



March 31, 2026	IGI Report No LG787646690	CUT CORNERED RECT. MODIFIED BRILLIANT	7.42 X 5.29 X 3.41 MM	1.21 CARAT	E	VVS 2	64.6%	65%	Slightly Thick	Pointed	EXCELLENT	EXCELLENT	NONE	IGI LG787646690
Polish	Symmetry	Fluorescence	Inscription(s)	Culet	Polish	Symmetry	Fluorescence	Inscription(s)	Culet	Polish	Symmetry	Fluorescence	Inscription(s)	IGI LG787646690

Comments: This Laboratory Grown Diamond was created by Chemical Vapor Deposition (CVD) growth process.
Type IIa