



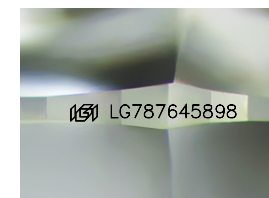
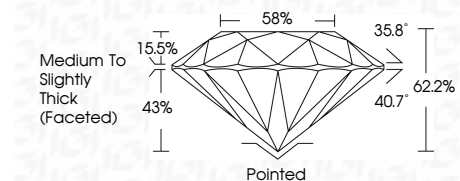
ELECTRONIC COPY

LG787645898
Report verification at igi.org



April 3, 2026
IGI Report Number LG787645898
Description LABORATORY GROWN DIAMOND
Shape and Cutting Style ROUND BRILLIANT
Measurements 9.20 - 9.24 X 5.74 MM

GRADING RESULTS
Carat Weight 3.04 CARATS
Color Grade E
Clarity Grade VS 1
Cut Grade IDEAL



Sample Image Used

ADDITIONAL GRADING INFORMATION
Polish EXCELLENT
Symmetry EXCELLENT
Fluorescence NONE
Inscription(s) IGI LG787645898
Comments: This Laboratory Grown Diamond was created by Chemical Vapor Deposition (CVD) growth process. Type IIa



April 3, 2026
IGI Report No LG787645898
ROUND BRILLIANT
9.20 - 9.24 X 5.74 MM
3.04 CARATS E
Color Grade VS 1 IDEAL
Clarity Grade VS 1 IDEAL
Depth 62.2%
Table 58%
Medium To Slightly Thick (Faceted)
Cutler Pointed EXCELLENT
Polish EXCELLENT
Symmetry EXCELLENT
Fluorescence NONE
Inscriptions(s) IGI LG787645898
Comments: This Laboratory Grown Diamond was created by Chemical Vapor Deposition (CVD) growth process. Type IIa

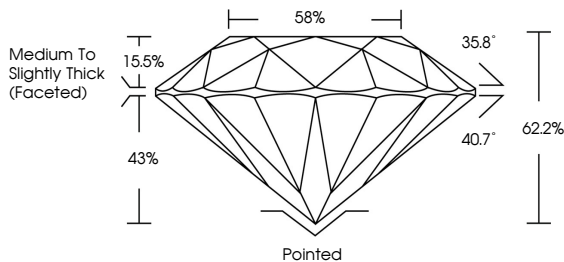
April 3, 2026
IGI Report Number LG787645898
Description LABORATORY GROWN DIAMOND
Shape and Cutting Style ROUND BRILLIANT
Measurements 9.20 - 9.24 X 5.74 MM

GRADING RESULTS
Carat Weight 3.04 CARATS
Color Grade E
Clarity Grade VS 1
Cut Grade IDEAL

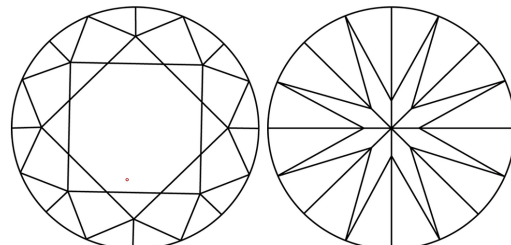
ADDITIONAL GRADING INFORMATION
Polish EXCELLENT
Symmetry EXCELLENT
Fluorescence NONE
Inscription(s) IGI LG787645898

Comments: This Laboratory Grown Diamond was created by Chemical Vapor Deposition (CVD) growth process. Type IIa

PROPORTIONS



CLARITY CHARACTERISTICS



KEY TO SYMBOLS
Red symbols indicate internal characteristics.
Green symbols indicate external characteristics.

Table with 10 columns: D, E, F, G, H, I, J, Faint, Very Light, Light

Table with 6 columns: FL, IF, VS 1-2, VS 1-2, SI 1-2, I 1-3

