



**ELECTRONIC COPY**

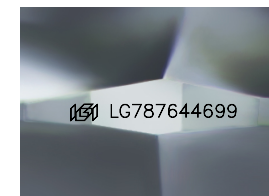
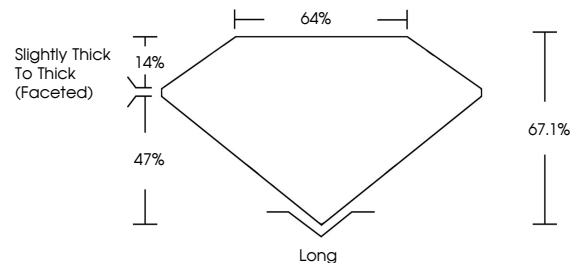
LG787644699  
Report verification at igi.org



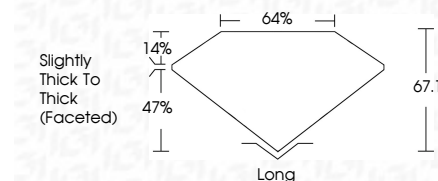
March 31, 2026  
IGI Report Number **LG787644699**  
Description **LABORATORY GROWN DIAMOND**  
Shape and Cutting Style **MODIFIED RECTANGULAR  
CUSHION MIXED CUT**  
Measurements **9.19 X 5.44 X 3.65 MM**  
**GRADING RESULTS**  
Carat Weight **1.72 CARAT**  
Color Grade **D**  
Clarity Grade **VS 1**

March 31, 2026  
IGI Report Number **LG787644699**  
Description **LABORATORY GROWN DIAMOND**  
Shape and Cutting Style **MODIFIED RECTANGULAR  
CUSHION MIXED CUT**  
Measurements **9.19 X 5.44 X 3.65 MM**  
**GRADING RESULTS**  
Carat Weight **1.72 CARAT**  
Color Grade **D**  
Clarity Grade **VS 1**

**PROPORTIONS**



Sample Image Used



**ADDITIONAL GRADING INFORMATION**

Polish **EXCELLENT**  
Symmetry **EXCELLENT**  
Fluorescence **NONE**  
Inscription(s) **IGI LG787644699**

Comments: This Laboratory Grown Diamond was created by Chemical Vapor Deposition (CVD) growth process.  
Type IIa

**ADDITIONAL GRADING INFORMATION**

Polish **EXCELLENT**  
Symmetry **EXCELLENT**  
Fluorescence **NONE**  
Inscription(s) **IGI LG787644699**  
Comments: This Laboratory Grown Diamond was created by Chemical Vapor Deposition (CVD) growth process.  
Type IIa

**COLOR**

D E F G H I J Faint Very Light Light

**CLARITY**

FL	IF	VS <sup>1-2</sup>	VS <sup>1-2</sup>	SI <sup>1-2</sup>	I <sup>1-3</sup>
Flawless	Internally Flawless	Very Very Slightly Included	Very Slightly Included	Slightly Included	Included



**IGI**



March 31, 2026  
IGI Report No **LG787644699**  
**MODIFIED RECTANGULAR CUSHION MIXED CUT**  
**9.19 X 5.44 X 3.65 MM**  
Carat Weight **1.72 CARAT**  
Color Grade **D**  
Clarity Grade **VS 1**  
Depth **67.1%**  
Table **14%**  
Girdle **Slightly Thick To Thick (Faceted)**  
Culet **Long**  
Polish **EXCELLENT**  
Symmetry **EXCELLENT**  
Fluorescence **NONE**  
Inscription(s) **IGI LG787644699**

Comments: This Laboratory Grown Diamond was created by Chemical Vapor Deposition (CVD) growth process.  
Type IIa