



ELECTRONIC COPY

LG787644696
Report verification at igi.org



April 9, 2026

IGI Report Number **LG787644696**

Description **LABORATORY GROWN DIAMOND**

Shape and Cutting Style **OLD EUROPEAN CUT**

Measurements **6.68 - 6.70 X 4.21 MM**

GRADING RESULTS

Carat Weight **1.28 CARAT**

Color Grade **D**

Clarity Grade **VVS 2**

April 9, 2026

IGI Report Number **LG787644696**

Description **LABORATORY GROWN DIAMOND**

Shape and Cutting Style **OLD EUROPEAN CUT**

Measurements **6.68 - 6.70 X 4.21 MM**

GRADING RESULTS

Carat Weight **1.28 CARAT**

Color Grade **D**

Clarity Grade **VVS 2**

ADDITIONAL GRADING INFORMATION

Polish **EXCELLENT**

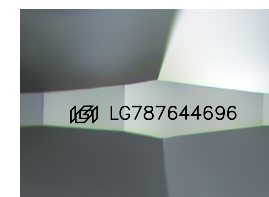
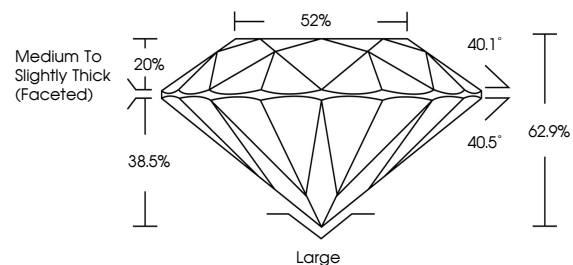
Symmetry **EXCELLENT**

Fluorescence **NONE**

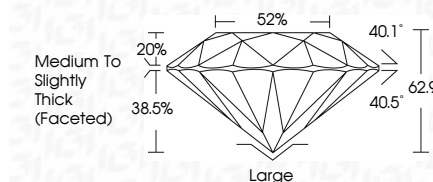
Inscription(s) **IGI LG787644696**

Comments: This Laboratory Grown Diamond was created by Chemical Vapor Deposition (CVD) growth process. Type IIa

PROPORTIONS



Sample Image Used



COLOR

D E F G H I J Faint Very Light Light

CLARITY

FL	IF	VS ¹⁻²	VS ¹⁻²	SI ¹⁻²	I ¹⁻³
Flawless	Internally Flawless	Very Very Slightly Included	Very Slightly Included	Slightly Included	Included

ADDITIONAL GRADING INFORMATION

Polish **EXCELLENT**

Symmetry **EXCELLENT**

Fluorescence **NONE**

Inscription(s) **IGI LG787644696**

Comments: This Laboratory Grown Diamond was created by Chemical Vapor Deposition (CVD) growth process. Type IIa



IGI



April 9, 2026
IGI Report No. **LG787644696**
OLD EUROPEAN CUT
6.68 - 6.70 X 4.21 MM
Carat Weight **1.28 CARAT**
Color Grade **D**
Clarity Grade **VVS 2**
Table **62.9%**
Depth **40.1%**
Girdle **Medium to Slightly Thick (Faceted)**
Culet **Large**
Polish **EXCELLENT**
Symmetry **EXCELLENT**
Fluorescence **NONE**
Inscription(s) **IGI LG787644696**

Comments: This Laboratory Grown Diamond was created by Chemical Vapor Deposition (CVD) growth process. Type IIa