



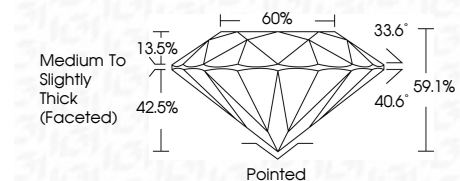
**ELECTRONIC COPY**

LG787641023  
Report verification at igi.org



March 29, 2026  
IGI Report Number **LG787641023**  
Description **LABORATORY GROWN DIAMOND**  
Shape and Cutting Style **ROUND BRILLIANT**  
Measurements **7.42 - 7.46 X 4.40 MM**

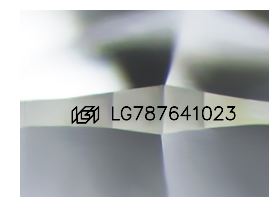
**GRADING RESULTS**  
Carat Weight **1.48 CARAT**  
Color Grade **D**  
Clarity Grade **VS 1**  
Cut Grade **IDEAL**



**ADDITIONAL GRADING INFORMATION**  
Polish **EXCELLENT**  
Symmetry **EXCELLENT**  
Fluorescence **NONE**  
Inscription(s) **IGI LG787641023**  
Comments: This Laboratory Grown Diamond was created by Chemical Vapor Deposition (CVD) growth process. Type IIa

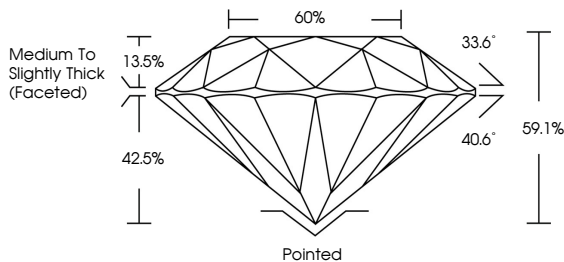


March 29, 2026  
IGI Report No LG787641023  
**ROUND BRILLIANT**  
1.48 CARAT  
Color Grade **D**  
Clarity Grade **VS 1**  
Depth **59.1%**  
Table **60%**  
Crown Height **13.5%**  
Crown Angle **33.6°**  
Pavilion Angle **40.6°**  
Total Depth **59.1%**  
Crown **Medium To Slightly Thick (Faceted)**  
Bottom **Pointed**  
Polish **EXCELLENT**  
Symmetry **EXCELLENT**  
Fluorescence **NONE**  
Inscription(s) **IGI LG787641023**  
Comments: This Laboratory Grown Diamond was created by Chemical Vapor Deposition (CVD) growth process. Type IIa

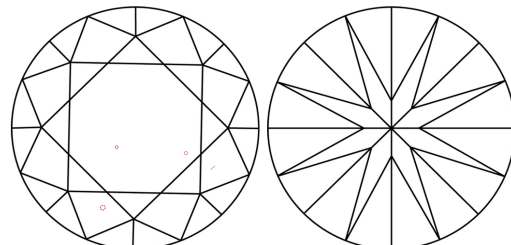


Sample Image Used

**PROPORTIONS**



**CLARITY CHARACTERISTICS**



**KEY TO SYMBOLS**  
Red symbols indicate internal characteristics.  
Green symbols indicate external characteristics.

**COLOR**

D	E	F	G	H	I	J	Faint	Very Light	Light
---	---	---	---	---	---	---	-------	------------	-------

**CLARITY**

FL	IF	VS <sup>1-2</sup>	VS <sup>1-2</sup>	SI <sup>1-2</sup>	I <sup>1-3</sup>
Flawless	Internally Flawless	Very Very Slightly Included	Very Slightly Included	Slightly Included	Included

