



**ELECTRONIC COPY**

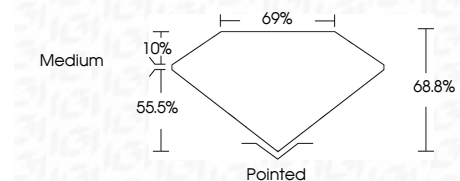
LG787633213  
Report verification at igi.org



March 30, 2026  
IGI Report Number **LG787633213**  
Description **LABORATORY GROWN DIAMOND**  
Shape and Cutting Style **PRINCESS CUT**  
Measurements **6.93 X 6.83 X 4.70 MM**

**GRADING RESULTS**

Carat Weight **1.89 CARAT**  
Color Grade **F**  
Clarity Grade **VVS 2**



**ADDITIONAL GRADING INFORMATION**

Polish **EXCELLENT**  
Symmetry **EXCELLENT**  
Fluorescence **NONE**  
Inscription(s) **IGI LG787633213**  
Comments: This Laboratory Grown Diamond was created by Chemical Vapor Deposition (CVD) growth process. Type IIa



March 30, 2026  
IGI Report No LG787633213  
**PRINCESS CUT**  
6.93 X 6.83 X 4.70 MM  
1.89 CARAT  
F  
VVS 2  
68.8%  
69%  
Medium  
Pointed  
EXCELLENT  
EXCELLENT  
NONE  
IGI LG787633213  
Comments: This Laboratory Grown Diamond was created by Chemical Vapor Deposition (CVD) growth process. Type IIa

**LABORATORY GROWN DIAMOND REPORT**

March 30, 2026  
IGI Report Number **LG787633213**  
Description **LABORATORY GROWN DIAMOND**  
Shape and Cutting Style **PRINCESS CUT**  
Measurements **6.93 X 6.83 X 4.70 MM**

**GRADING RESULTS**

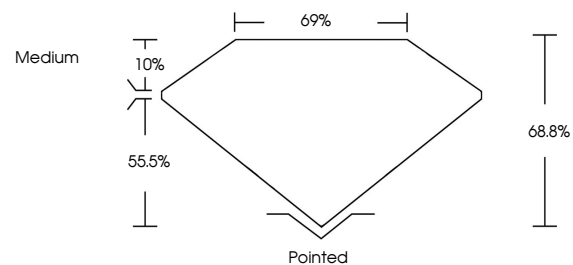
Carat Weight **1.89 CARAT**  
Color Grade **F**  
Clarity Grade **VVS 2**

**ADDITIONAL GRADING INFORMATION**

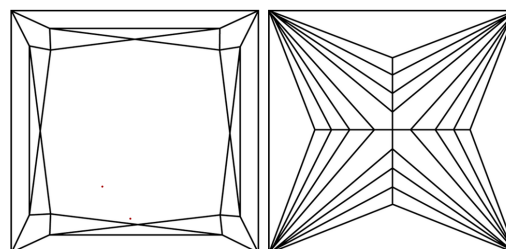
Polish **EXCELLENT**  
Symmetry **EXCELLENT**  
Fluorescence **NONE**  
Inscription(s) **IGI LG787633213**

Comments: This Laboratory Grown Diamond was created by Chemical Vapor Deposition (CVD) growth process. Type IIa

**PROPORTIONS**

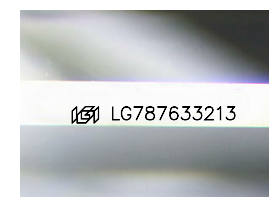


**CLARITY CHARACTERISTICS**



**KEY TO SYMBOLS**

Red symbols indicate internal characteristics.  
Green symbols indicate external characteristics.



Sample Image Used

**COLOR**

D E F G H I J Faint Very Light Light

**CLARITY**

FL	IF	VVS <sup>1-2</sup>	VS <sup>1-2</sup>	SI <sup>1-2</sup>	I <sup>1-3</sup>
Flawless	Internally Flawless	Very Very Slightly Included	Very Slightly Included	Slightly Included	Included

