



ELECTRONIC COPY

LG787633202
Report verification at igi.org



March 30, 2026

IGI Report Number **LG787633202**

Description **LABORATORY GROWN DIAMOND**

Shape and Cutting Style **ROUND BRILLIANT**

Measurements **7.29 - 7.32 X 4.58 MM**

GRADING RESULTS

Carat Weight **1.52 CARAT**

Color Grade **E**

Clarity Grade **VS 1**

Cut Grade **EXCELLENT**

March 30, 2026

IGI Report Number **LG787633202**

Description **LABORATORY GROWN DIAMOND**

Shape and Cutting Style **ROUND BRILLIANT**

Measurements **7.29 - 7.32 X 4.58 MM**

GRADING RESULTS

Carat Weight **1.52 CARAT**

Color Grade **E**

Clarity Grade **VS 1**

Cut Grade **EXCELLENT**

ADDITIONAL GRADING INFORMATION

Polish **EXCELLENT**

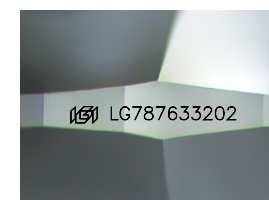
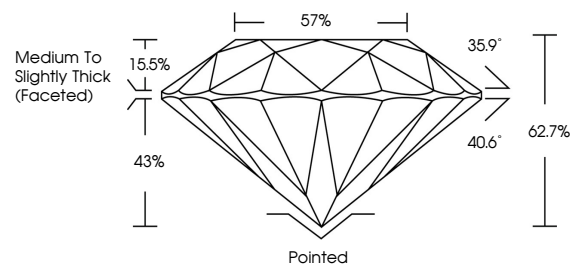
Symmetry **EXCELLENT**

Fluorescence **NONE**

Inscription(s) **IGI LG787633202**

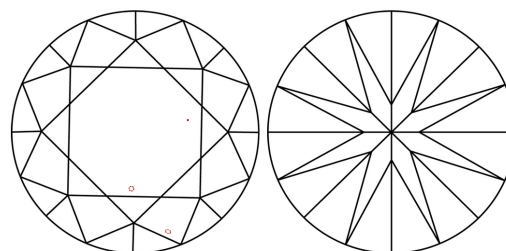
Comments: This Laboratory Grown Diamond was created by Chemical Vapor Deposition (CVD) growth process.
Type IIa

PROPORTIONS



Sample Image Used

CLARITY CHARACTERISTICS



KEY TO SYMBOLS

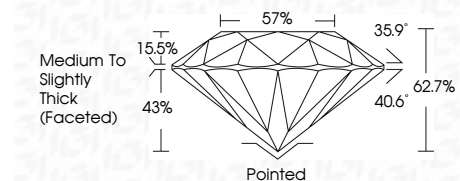
Red symbols indicate internal characteristics.
Green symbols indicate external characteristics.

COLOR

D E F G H I J Faint Very Light Light

CLARITY

FL	IF	VS ¹⁻²	VS ¹⁻²	SI ¹⁻²	I ¹⁻³
Flawless	Internally Flawless	Very Very Slightly Included	Very Slightly Included	Slightly Included	Included



ADDITIONAL GRADING INFORMATION

Polish **EXCELLENT**

Symmetry **EXCELLENT**

Fluorescence **NONE**

Inscription(s) **IGI LG787633202**

Comments: This Laboratory Grown Diamond was created by Chemical Vapor Deposition (CVD) growth process.
Type IIa



IGI



March 30, 2026
IGI Report No LG787633202
ROUND BRILLIANT

1.52 CARAT
E

7.29 - 7.32 X 4.58 MM
EXCELLENT
62.7%
57%
Medium To Slightly Thick (Faceted)

Pointed
EXCELLENT
EXCELLENT
NONE
IGI LG787633202

Culet
Polish
Symmetry
Fluorescence
Inscription(s)

Comments: This Laboratory Grown Diamond was created by Chemical Vapor Deposition (CVD) growth process.
Type IIa