



March 28, 2026

IGI Report Number **LG787632280**

**ROUND BRILLIANT  
LABORATORY GROWN DIAMOND  
5.20 - 5.24 X 3.27 MM**

|                |                        |
|----------------|------------------------|
| Carat Weight   | <b>0.55 CARAT</b>      |
| Color Grade    | <b>E</b>               |
| Clarity Grade  | <b>VVS 2</b>           |
| Cut Grade      | <b>EXCELLENT</b>       |
| Polish         | <b>EXCELLENT</b>       |
| Symmetry       | <b>EXCELLENT</b>       |
| Fluorescence   | <b>NONE</b>            |
| Inscription(s) | <b>IGI LG787632280</b> |

Comments: As Grown - No indication of post-growth treatment. This Laboratory Grown Diamond was created by High Pressure High Temperature (HPHT) growth process. Type II

**LABORATORY GROWN DIAMOND REPORT**

|                         |                                 |
|-------------------------|---------------------------------|
| March 28, 2026          |                                 |
| IGI Report Number       | <b>LG787632280</b>              |
| Description             | <b>LABORATORY GROWN DIAMOND</b> |
| Shape and Cutting Style | <b>ROUND BRILLIANT</b>          |
| Measurements            | <b>5.20 - 5.24 X 3.27 MM</b>    |

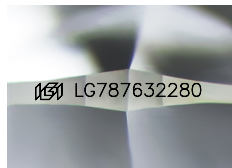
**GRADING RESULTS**

|               |                   |
|---------------|-------------------|
| Carat Weight  | <b>0.55 CARAT</b> |
| Color Grade   | <b>E</b>          |
| Clarity Grade | <b>VVS 2</b>      |
| Cut Grade     | <b>EXCELLENT</b>  |

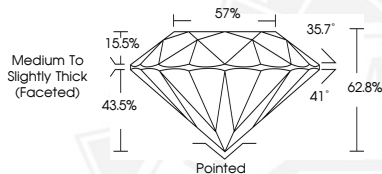
**ADDITIONAL GRADING INFORMATION**

|                |                        |
|----------------|------------------------|
| Polish         | <b>EXCELLENT</b>       |
| Symmetry       | <b>EXCELLENT</b>       |
| Fluorescence   | <b>NONE</b>            |
| Inscription(s) | <b>IGI LG787632280</b> |

Comments: As Grown - No indication of post-growth treatment. This Laboratory Grown Diamond was created by High Pressure High Temperature (HPHT) growth process. Type II



Sample Image Used



March 28, 2026

IGI Report Number **LG787632280**

**ROUND BRILLIANT  
LABORATORY GROWN DIAMOND  
5.20 - 5.24 X 3.27 MM**

|                |                        |
|----------------|------------------------|
| Carat Weight   | <b>0.55 CARAT</b>      |
| Color Grade    | <b>E</b>               |
| Clarity Grade  | <b>VVS 2</b>           |
| Cut Grade      | <b>EXCELLENT</b>       |
| Polish         | <b>EXCELLENT</b>       |
| Symmetry       | <b>EXCELLENT</b>       |
| Fluorescence   | <b>NONE</b>            |
| Inscription(s) | <b>IGI LG787632280</b> |

Comments: As Grown - No indication of post-growth treatment. This Laboratory Grown Diamond was created by High Pressure High Temperature (HPHT) growth process. Type II

THIS DOCUMENT WAS PRODUCED WITH THE FOLLOWING SECURITY MEASURES: SPECIAL DOCUMENT PAPER, INK SCREENS, WATERMARK, BACKGROUND DESIGNS, HOLOGRAM AND OTHER SECURITY FEATURES NOT LISTED AND DO EXCEED DOCUMENT SECURITY INDUSTRY GUIDELINES.

For terms & conditions and to verify this report, please visit [www.igi.org](http://www.igi.org)