



ELECTRONIC COPY

LG787630627
Report verification at igi.org



April 6, 2026
IGI Report Number **LG787630627**
Description **LABORATORY GROWN DIAMOND**
Shape and Cutting Style **ROUND BRILLIANT**
Measurements **6.53 - 6.58 X 4.04 MM**
GRADING RESULTS
Carat Weight **1.06 CARAT**
Color Grade **D**
Clarity Grade **INTERNALLY FLAWLESS**
Cut Grade **IDEAL**

April 6, 2026
IGI Report Number **LG787630627**
Description **LABORATORY GROWN DIAMOND**
Shape and Cutting Style **ROUND BRILLIANT**
Measurements **6.53 - 6.58 X 4.04 MM**

GRADING RESULTS

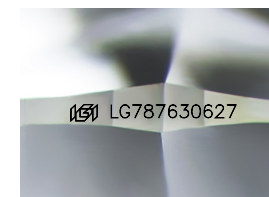
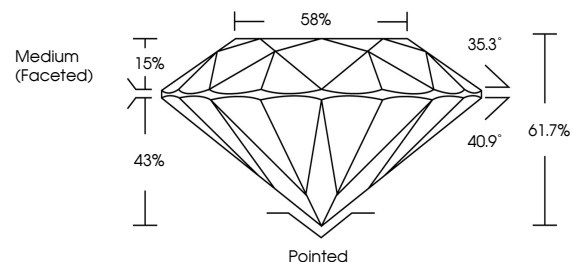
Carat Weight **1.06 CARAT**
Color Grade **D**
Clarity Grade **INTERNALLY FLAWLESS**
Cut Grade **IDEAL**

ADDITIONAL GRADING INFORMATION

Polish **EXCELLENT**
Symmetry **EXCELLENT**
Fluorescence **NONE**
Inscription(s) **LG787630627**

Comments: As Grown - No indication of post-growth treatment.
This Laboratory Grown Diamond was created by High Pressure High Temperature (HPHT) growth process.
Type II

PROPORTIONS



Sample Image Used

CLARITY CHARACTERISTICS



KEY TO SYMBOLS

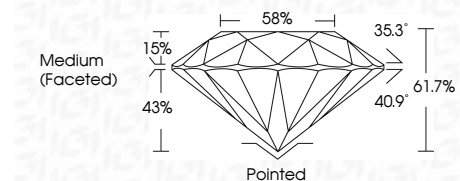
Red symbols indicate internal characteristics.
Green symbols indicate external characteristics.

COLOR

D E F G H I J Faint Very Light Light

CLARITY

FL	IF	VS ¹⁻²	VS ¹⁻²	SI ¹⁻²	I ¹⁻³
Flawless	Internally Flawless	Very Very Slightly Included	Very Slightly Included	Slightly Included	Included



ADDITIONAL GRADING INFORMATION

Polish **EXCELLENT**
Symmetry **EXCELLENT**
Fluorescence **NONE**
Inscription(s) **LG787630627**
Comments: As Grown - No indication of post-growth treatment.
This Laboratory Grown Diamond was created by High Pressure High Temperature (HPHT) growth process.
Type II



IGI



April 6, 2026
IGI Report No **LG787630627**
ROUND BRILLIANT
6.53 - 6.58 X 4.04 MM
Carat Weight **1.06 CARAT**
Color Grade **D**
Clarity Grade **IF**
Cut Grade **IDEAL**
Depth **61.7%**
Table **15%**
Girdle **Medium (Faceted)**
Culet **Pointed**
Polish **EXCELLENT**
Symmetry **EXCELLENT**
Fluorescence **NONE**
Inscriptions(s) **LG787630627**
Comments: As Grown - No indication of post-growth treatment.
This Laboratory Grown Diamond was created by High Pressure High Temperature (HPHT) growth process.
Type II