



**ELECTRONIC COPY**

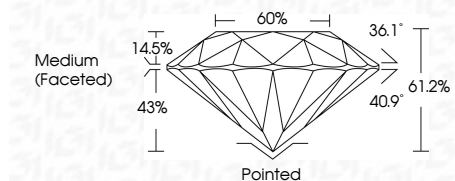
LG787629233  
Report verification at igi.org



April 6, 2026  
IGI Report Number **LG787629233**  
Description **LABORATORY GROWN DIAMOND**  
Shape and Cutting Style **ROUND BRILLIANT**  
Measurements **7.18 - 7.30 X 4.44 MM**

**GRADING RESULTS**

Carat Weight **1.43 CARAT**  
Color Grade **D**  
Clarity Grade **VVS 2**  
Cut Grade **VERY GOOD**

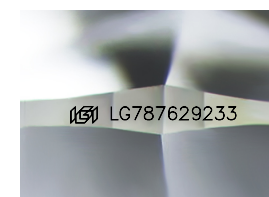


**ADDITIONAL GRADING INFORMATION**

Polish **EXCELLENT**  
Symmetry **GOOD**  
Fluorescence **NONE**  
Inscription(s) **IGI LG787629233**  
Comments: As Grown - No indication of post-growth treatment.  
This Laboratory Grown Diamond was created by High Pressure High Temperature (HPHT) growth process.  
Type II

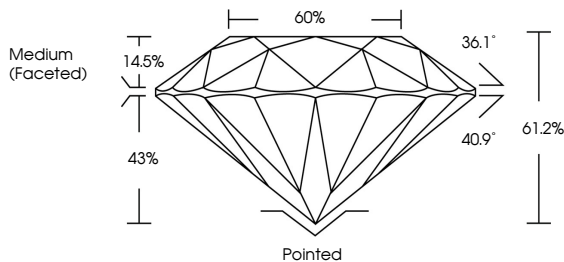


April 6, 2026  
IGI Report No LG787629233  
**ROUND BRILLIANT**  
7.18 - 7.30 X 4.44 MM  
1.43 CARAT  
D  
VVS 2  
VERY GOOD  
61.2%  
60%  
Medium (Faceted)  
Pointed  
EXCELLENT  
GOOD  
NONE  
IGI LG787629233  
Comments: As Grown - No indication of post-growth treatment.  
This Laboratory Grown Diamond was created by High Pressure High Temperature (HPHT) growth process.  
Type II

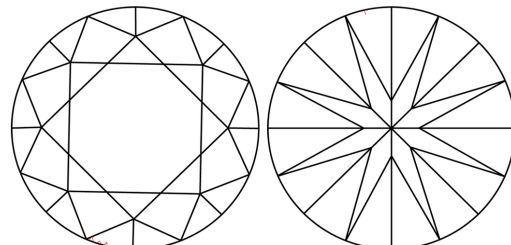


Sample Image Used

**PROPORTIONS**



**CLARITY CHARACTERISTICS**



**KEY TO SYMBOLS**

Red symbols indicate internal characteristics.  
Green symbols indicate external characteristics.

**COLOR**

D	E	F	G	H	I	J	Faint	Very Light	Light
---	---	---	---	---	---	---	-------	------------	-------

**CLARITY**

FL	IF	VVS <sup>1-2</sup>	VS <sup>1-2</sup>	SI <sup>1-2</sup>	I <sup>1-3</sup>
Flawless	Internally Flawless	Very Very Slightly Included	Very Slightly Included	Slightly Included	Included

