



ELECTRONIC COPY

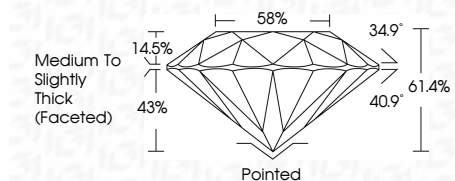
LG787629212
Report verification at igi.org



April 6, 2026
IGI Report Number **LG787629212**
Description **LABORATORY GROWN DIAMOND**
Shape and Cutting Style **ROUND BRILLIANT**
Measurements **6.48 - 6.53 X 3.99 MM**

GRADING RESULTS

Carat Weight **1.03 CARAT**
Color Grade **D**
Clarity Grade **VS 2**
Cut Grade **IDEAL**



ADDITIONAL GRADING INFORMATION

Polish **VERY GOOD**
Symmetry **VERY GOOD**
Fluorescence **NONE**
Inscription(s) **IGI LG787629212**
Comments: This Laboratory Grown Diamond was created by Chemical Vapor Deposition (CVD) growth process. Type IIa



April 6, 2026
IGI Report No **LG787629212**
ROUND BRILLIANT
6.48 - 6.53 X 3.99 MM
1.03 CARAT
D
VS 2
IDEAL
61.4%
58%
Medium To Slightly Thick (Faceted)
Pointed
VERY GOOD
VERY GOOD
NONE
IGI LG787629212
Comments: This Laboratory Grown Diamond was created by Chemical Vapor Deposition (CVD) growth process. Type IIa

April 6, 2026
IGI Report Number **LG787629212**
Description **LABORATORY GROWN DIAMOND**
Shape and Cutting Style **ROUND BRILLIANT**
Measurements **6.48 - 6.53 X 3.99 MM**

GRADING RESULTS

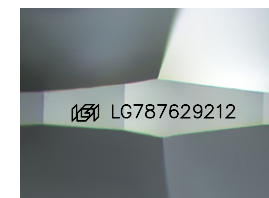
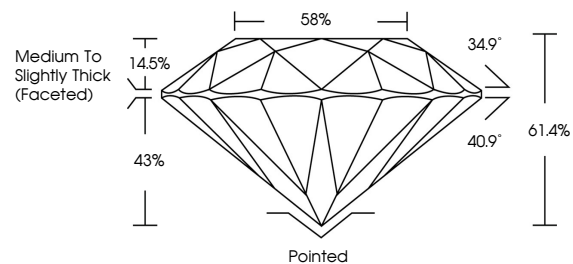
Carat Weight **1.03 CARAT**
Color Grade **D**
Clarity Grade **VS 2**
Cut Grade **IDEAL**

ADDITIONAL GRADING INFORMATION

Polish **VERY GOOD**
Symmetry **VERY GOOD**
Fluorescence **NONE**
Inscription(s) **IGI LG787629212**

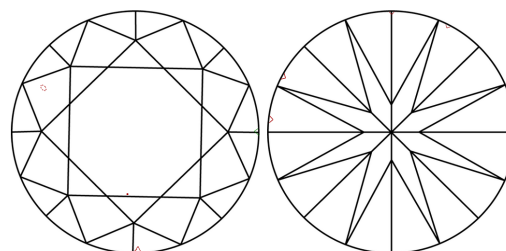
Comments: This Laboratory Grown Diamond was created by Chemical Vapor Deposition (CVD) growth process. Type IIa

PROPORTIONS



Sample Image Used

CLARITY CHARACTERISTICS



KEY TO SYMBOLS

Red symbols indicate internal characteristics.
Green symbols indicate external characteristics.

COLOR

D E F G H I J Faint Very Light Light

CLARITY

FL	IF	VS ¹⁻²	VS ¹⁻²	SI ¹⁻²	I ¹⁻³
Flawless	Internally Flawless	Very Very Slightly Included	Very Slightly Included	Slightly Included	Included

