



ELECTRONIC COPY

LG787623564
Report verification at igi.org



May 27, 2026
IGI Report Number **LG787623564**
Description **LABORATORY GROWN DIAMOND**
Shape and Cutting Style **OVAL BRILLIANT**
Measurements **11.37 X 8.12 X 5.07 MM**
GRADING RESULTS
Carat Weight **3.00 CARATS**
Color Grade **D**
Clarity Grade **INTERNALLY FLAWLESS**

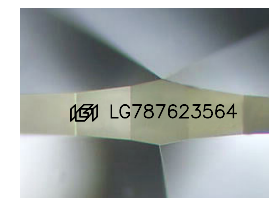
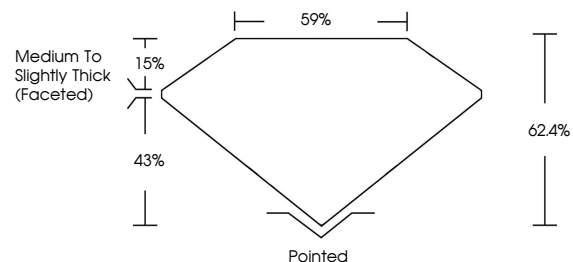
May 27, 2026
IGI Report Number **LG787623564**
Description **LABORATORY GROWN DIAMOND**
Shape and Cutting Style **OVAL BRILLIANT**
Measurements **11.37 X 8.12 X 5.07 MM**

GRADING RESULTS
Carat Weight **3.00 CARATS**
Color Grade **D**
Clarity Grade **INTERNALLY FLAWLESS**

ADDITIONAL GRADING INFORMATION
Polish **EXCELLENT**
Symmetry **EXCELLENT**
Fluorescence **NONE**
Inscription(s) **IGI LG787623564**

Comments: As Grown - No indication of post-growth treatment.
This Laboratory Grown Diamond was created by High Pressure High Temperature (HPHT) growth process.
Type II

PROPORTIONS



Sample Image Used

CLARITY CHARACTERISTICS



KEY TO SYMBOLS

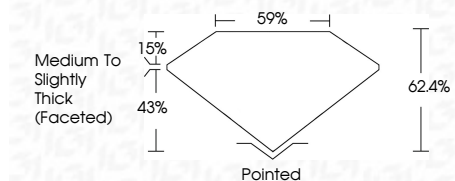
Red symbols indicate internal characteristics.
Green symbols indicate external characteristics.

COLOR

D E F G H I J Faint Very Light Light

CLARITY

FL	IF	VS ¹⁻²	VS ¹⁻²	SI ¹⁻²	I ¹⁻³
Flawless	Internally Flawless	Very Very Slightly Included	Very Slightly Included	Slightly Included	Included



ADDITIONAL GRADING INFORMATION

Polish **EXCELLENT**
Symmetry **EXCELLENT**
Fluorescence **NONE**
Inscription(s) **IGI LG787623564**
Comments: As Grown - No indication of post-growth treatment.
This Laboratory Grown Diamond was created by High Pressure High Temperature (HPHT) growth process.
Type II



May 27, 2026
IGI Report No LG787623564
OVAL BRILLIANT
3.00 CARATS
D
11.37 X 8.12 X 5.07 MM
3.00 CARATS
D
15%
43%
62.4%
59%
Medium to Slightly Thick (Faceted)
Pointed
EXCELLENT
EXCELLENT
NONE
IGI LG787623564

Comments: As Grown - No indication of post-growth treatment.
This Laboratory Grown Diamond was created by High Pressure High Temperature (HPHT) growth process.
Type II