



**ELECTRONIC COPY**

LG787623082  
Report verification at igi.org



May 22, 2026  
IGI Report Number **LG787623082**  
Description **LABORATORY GROWN DIAMOND**  
Shape and Cutting Style **CUSHION MODIFIED BRILLIANT**  
Measurements **9.74 X 7.84 X 5.15 MM**  
**GRADING RESULTS**  
Carat Weight **3.09 CARATS**  
Color Grade **D**  
Clarity Grade **VVS 1**

May 22, 2026  
IGI Report Number **LG787623082**  
Description **LABORATORY GROWN DIAMOND**  
Shape and Cutting Style **CUSHION MODIFIED BRILLIANT**  
Measurements **9.74 X 7.84 X 5.15 MM**

**GRADING RESULTS**

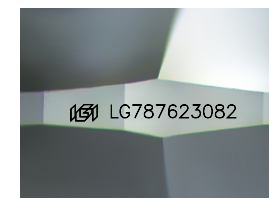
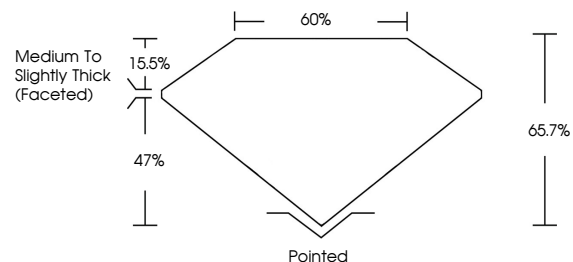
Carat Weight **3.09 CARATS**  
Color Grade **D**  
Clarity Grade **VVS 1**

**ADDITIONAL GRADING INFORMATION**

Polish **EXCELLENT**  
Symmetry **EXCELLENT**  
Fluorescence **NONE**  
Inscription(s) **IGI LG787623082**

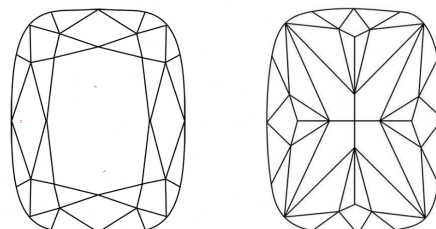
Comments: As Grown - No indication of post-growth treatment.  
This Laboratory Grown Diamond was created by High Pressure High Temperature (HPHT) growth process. Type II

**PROPORTIONS**



Sample Image Used

**CLARITY CHARACTERISTICS**



**KEY TO SYMBOLS**

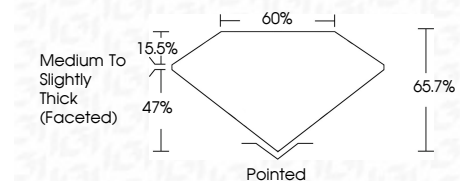
Red symbols indicate internal characteristics.  
Green symbols indicate external characteristics.

**COLOR**

D E F G H I J Faint Very Light Light

**CLARITY**

FL	IF	VVS <sup>1-2</sup>	VS <sup>1-2</sup>	SI <sup>1-2</sup>	I <sup>1-3</sup>
Flawless	Internally Flawless	Very Very Slightly Included	Very Slightly Included	Slightly Included	Included



**ADDITIONAL GRADING INFORMATION**

Polish **EXCELLENT**  
Symmetry **EXCELLENT**  
Fluorescence **NONE**  
Inscription(s) **IGI LG787623082**  
Comments: As Grown - No indication of post-growth treatment.  
This Laboratory Grown Diamond was created by High Pressure High Temperature (HPHT) growth process. Type II



May 22, 2026  
IGI Report No LG787623082  
CUSHION MODIFIED BRILLIANT  
9.74 X 7.84 X 5.15 MM  
3.09 CARATS  
D  
VVS 1  
65.7%  
47%  
Medium to Slightly Thick (Faceted)  
Pointed  
EXCELLENT  
EXCELLENT  
NONE  
IGI LG787623082

Comments: As Grown - No indication of post-growth treatment.  
This Laboratory Grown Diamond was created by High Pressure High Temperature (HPHT) growth process. Type II