



**ELECTRONIC COPY**

LG787622937  
Report verification at igi.org



May 22, 2026  
IGI Report Number **LG787622937**  
Description **LABORATORY GROWN DIAMOND**  
Shape and Cutting Style **ROUND BRILLIANT**  
Measurements **9.31 - 9.36 X 5.74 MM**  
**GRADING RESULTS**  
Carat Weight **3.07 CARATS**  
Color Grade **D**  
Clarity Grade **INTERNALLY FLAWLESS**  
Cut Grade **IDEAL**

May 22, 2026  
IGI Report Number **LG787622937**  
Description **LABORATORY GROWN DIAMOND**  
Shape and Cutting Style **ROUND BRILLIANT**  
Measurements **9.31 - 9.36 X 5.74 MM**

**GRADING RESULTS**

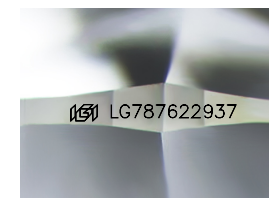
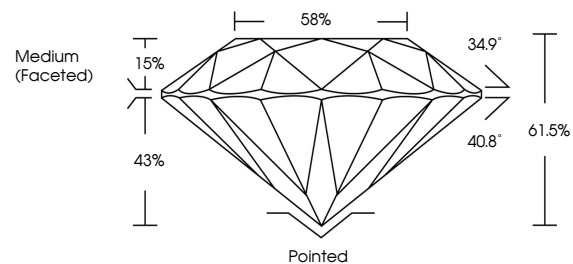
Carat Weight **3.07 CARATS**  
Color Grade **D**  
Clarity Grade **INTERNALLY FLAWLESS**  
Cut Grade **IDEAL**

**ADDITIONAL GRADING INFORMATION**

Polish **EXCELLENT**  
Symmetry **EXCELLENT**  
Fluorescence **NONE**  
Inscription(s) **IGI LG787622937**

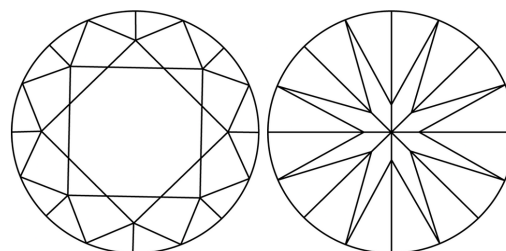
Comments: HEARTS & ARROWS  
As Grown - No indication of post-growth treatment.  
This Laboratory Grown Diamond was created by High Pressure High Temperature (HPHT) growth process.  
Type II

**PROPORTIONS**



Sample Image Used

**CLARITY CHARACTERISTICS**



**KEY TO SYMBOLS**

Red symbols indicate internal characteristics.  
Green symbols indicate external characteristics.

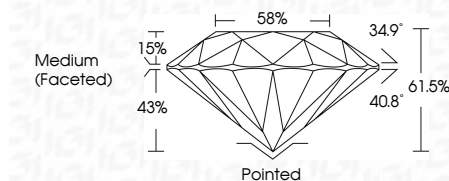


**COLOR**

D E F G H I J Faint Very Light Light

**CLARITY**

FL	IF	VS <sup>1-2</sup>	VS <sup>1-2</sup>	SI <sup>1-2</sup>	I <sup>1-3</sup>
Flawless	Internally Flawless	Very Very Slightly Included	Very Slightly Included	Slightly Included	Included



**ADDITIONAL GRADING INFORMATION**

Polish **EXCELLENT**  
Symmetry **EXCELLENT**  
Fluorescence **NONE**  
Inscription(s) **IGI LG787622937**  
Comments: HEARTS & ARROWS  
As Grown - No indication of post-growth treatment.  
This Laboratory Grown Diamond was created by High Pressure High Temperature (HPHT) growth process.  
Type II



May 22, 2026  
IGI Report No LG787622937  
**ROUND BRILLIANT**  
9.31 - 9.36 X 5.74 MM  
3.07 CARATS  
D  
D  
IDEAL  
61.5%  
58%  
Medium (Faceted)  
Pointed  
EXCELLENT  
EXCELLENT  
NONE  
IGI LG787622937  
Comments: HEARTS & ARROWS  
As Grown - No indication of post-growth treatment.  
This Laboratory Grown Diamond was created by High Pressure High Temperature (HPHT) growth process.  
Type II