



ELECTRONIC COPY

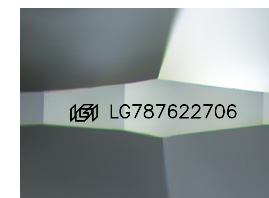
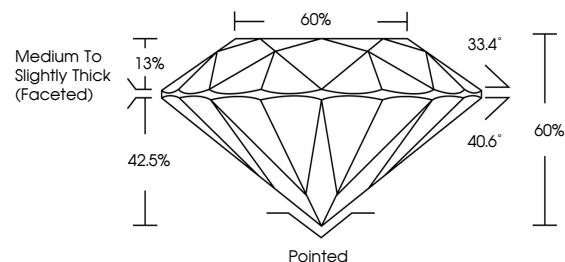
LG787622706
Report verification at igi.org



May 12, 2026
IGI Report Number LG787622706
Description LABORATORY GROWN DIAMOND
Shape and Cutting Style ROUND BRILLIANT
Measurements 6.73 - 6.76 X 4.04 MM
GRADING RESULTS
Carat Weight 1.14 CARAT
Color Grade D
Clarity Grade INTERNALLY FLAWLESS
Cut Grade IDEAL

May 12, 2026
IGI Report Number LG787622706
Description LABORATORY GROWN DIAMOND
Shape and Cutting Style ROUND BRILLIANT
Measurements 6.73 - 6.76 X 4.04 MM

PROPORTIONS

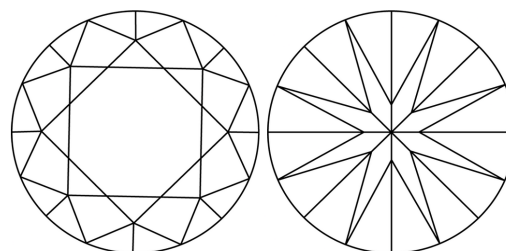


Sample Image Used

GRADING RESULTS

Carat Weight 1.14 CARAT
Color Grade D
Clarity Grade INTERNALLY FLAWLESS
Cut Grade IDEAL

CLARITY CHARACTERISTICS



KEY TO SYMBOLS

Red symbols indicate internal characteristics.
Green symbols indicate external characteristics.

ADDITIONAL GRADING INFORMATION

Polish EXCELLENT
Symmetry EXCELLENT
Fluorescence NONE
Inscription(s) LG787622706

Comments: As Grown - No indication of post-growth treatment.
This Laboratory Grown Diamond was created by High Pressure High Temperature (HPHT) growth process.
Type II

COLOR

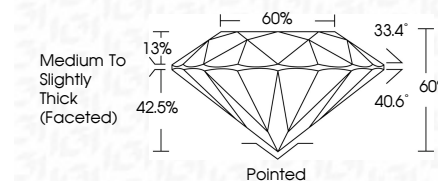
D E F G H I J Faint Very Light Light

CLARITY

FL IF VS 1-2 VS 1-2 SI 1-2 I 1-3
Flawless Internally Flawless Very Very Slightly Included Very Slightly Included Slightly Included Included

ADDITIONAL GRADING INFORMATION

Polish EXCELLENT
Symmetry EXCELLENT
Fluorescence NONE
Inscription(s) LG787622706
Comments: As Grown - No indication of post-growth treatment.
This Laboratory Grown Diamond was created by High Pressure High Temperature (HPHT) growth process.
Type II



IGI



May 12, 2026
IGI Report No LG787622706
ROUND BRILLIANT
1.14 CARAT
Color Grade D
Clarity Grade IF
Depth 65%
Girdle 65%
Medium To Slightly Thick (Faceted)
Cutler Pointed
Polish EXCELLENT
Symmetry EXCELLENT
Fluorescence NONE
Inscription(s) LG787622706
Comments: As Grown - No indication of post-growth treatment.
This Laboratory Grown Diamond was created by High Pressure High Temperature (HPHT) growth process.
Type II