



ELECTRONIC COPY

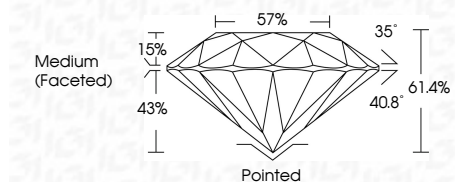
LG787620945
Report verification at igi.org



May 11, 2026
IGI Report Number **LG787620945**
Description **LABORATORY GROWN DIAMOND**
Shape and Cutting Style **ROUND BRILLIANT**
Measurements **6.57 - 6.60 X 4.05 MM**

GRADING RESULTS

Carat Weight **1.07 CARAT**
Color Grade **D**
Clarity Grade **FLAWLESS**
Cut Grade **IDEAL**



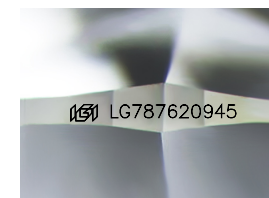
ADDITIONAL GRADING INFORMATION

Polish **EXCELLENT**
Symmetry **EXCELLENT**
Fluorescence **NONE**
Inscription(s) **IGI LG787620945**
Comments: As Grown - No indication of post-growth treatment.
This Laboratory Grown Diamond was created by High Pressure High Temperature (HPHT) growth process.
Type II



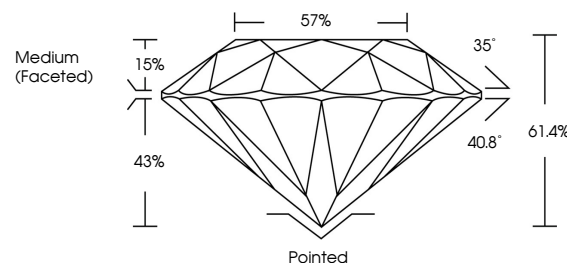
IGI

May 11, 2026
IGI Report No **LG787620945**
ROUND BRILLIANT
6.57 - 6.60 X 4.05 MM
Carat Weight **1.07 CARAT**
Color Grade **D**
Clarity Grade **FLAWLESS**
Cut Grade **IDEAL**
Depth **61.4%**
Table **57%**
Girdle **Medium (Faceted)**
Culet **Pointed**
Polish **EXCELLENT**
Symmetry **EXCELLENT**
Fluorescence **NONE**
Inscription(s) **IGI LG787620945**
Comments: As Grown - No indication of post-growth treatment.
This Laboratory Grown Diamond was created by High Pressure High Temperature (HPHT) growth process.
Type II

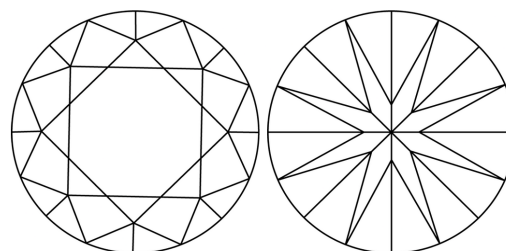


Sample Image Used

PROPORTIONS



CLARITY CHARACTERISTICS



KEY TO SYMBOLS

Red symbols indicate internal characteristics.
Green symbols indicate external characteristics.

COLOR

D E F G H I J Faint Very Light Light

CLARITY

FL	IF	VS ¹⁻²	VS ¹⁻²	SI ¹⁻²	I ¹⁻³
Flawless	Internally Flawless	Very Very Slightly Included	Very Slightly Included	Slightly Included	Included

